



For use with Drive Pro, Lot Pro, Diamond Edge, and Road Pro Super-V Plows

Operation and Maintenance Manual

Thank you...

Thank you for buying your Meyer Plow. As a new owner of hard-working, mechanical equipment, we strongly urge you to spend quality time with this owner's manual. It's easy to use and full of time-saving tips that will enhance your ownership experience. It includes suggestions for faster installation, safe operation and more productive plowing.

We also strongly urge you to register your new Meyer plow at meyerproducts.com. Registering will only take minutes and the benefits of doing so will last for years. When registered, you will receive timely and accurate communication on operation tips, maintenance, new products, and service bulletins.

And in the unlikely event you need warranty work done, your local servicing dealer will be able to process your claim faster.

Thanks again for your business. You can now look forward to many years of reliable performance and keeping your driveway safer and easier to use. If you have any questions about your Meyer plow, contact us at: www.meyerproducts.com or call 216-486-1313.



Andrew L. Outcalt
President, Meyer Products

Registration Data Sheet

Register your snowplow at www.meyerproducts.com

Owner Name _____

Address _____

City _____

State/Province _____ Zip/Postal Code _____

Purchased From Company Name _____

Contact Name _____

Address _____

City _____

State/Province _____ Zip/Postal Code _____

Phone Number _____

Date Purchased _____

Vehicle Make _____ Vehicle Model _____

Vehicle Year _____ Vehicle Model _____

Hydraulic Motor Serial Number _____

Moldboard Serial Number _____

Type of Mount _____

STEP UP TO A 5-YEAR WARRANTY



America's best snowplow warranty just got even better. When you purchase and register* any Meyer Lot Pro, Diamond Edge, Road Pro or Super-V with a Monarch hydraulic system (E-58H, E-70, E-72, V-70 and V-71), the complete snowplow will be covered for a full five years.

* Must register your complete plow system online to activate 5 year warranty.

Table of Contents



Registration Data Sheet	Inside Cover
Safety Definitions & Warnings	2-3
Introduction	4
EC Declaration of Conformity	5
Plow Component Identification	
Drive Pro	6-7
Lot Pro & Lot Pro LD	8-9
Diamond Edge	10-11
Super-V/V ² & SV ^D	12-13
Road Pro	14-17
Controller Operation	
Pistol Grip (22690DC)	18-19
Pistol Grip Deluxe (22695DC/22869DC)	20-21
Joystick (22790X and 22154)	22-24
Drive Pro Mounting System – Dismount/OFF	25
Drive Pro Mounting System – Mount/ON	26
EZ Plus Mounting System – Dismount/OFF (Lot Pro & Lot Pro LD, Super V & Super V LD and Diamond Edge Plows)	27
EZ Plus Mounting System – Mount/ON (Lot Pro & Lot Pro LD, Super V & Super V LD and Diamond Edge Plows)	28
Hydraulic Testing Tips/Trouble Shooting	
E72 Straight Blades	29-32
V70 V-Plows	33-36
V71 V-Plows	37-40
General Maintenance	
Drive Pro	41
Lot Pro & Lot Pro LD	42
Diamond Edge	43
Super V & Super V LD	44
Road Pro	45-46
General Maintenance	47-48
Pre-Season & Post-Season Maintenance	49-51
Snow Plow Storage	52
Warranty/Contact Meyer	53-55

Safety Definitions & Warnings

SAFETY DEFINITIONS



This is the safety alert symbol. It is used to alert you to potential personal injury hazards. Obey all safety messages that follow this symbol to avoid possible injury or death.

⚠ DANGER

DANGER Indicates an imminently hazardous situation which, if not avoided, will result in death or serious injury.

⚠ WARNING

WARNING Indicates a potentially hazardous situation which, if not avoided, could result in death or serious injury.

⚠ CAUTION










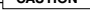



CAUTION Indicates a potentially hazardous situation which, if not avoided, may result in minor or moderate injury.

CAUTION

CAUTION used without the safety alert symbol indicates a potentially hazardous situation which, if not avoided, will result in property damage.

1	⚠ DANGER	<i>Never stand or ride on the plow assembly. Keep people and pets at least 25 feet away from the snow plow when in operation. Failure to comply will result in death or serious injury.</i>
2	⚠ WARNING	<i>Always lower moldboard to the ground when snow plow is being serviced or when vehicle is not in use. Failure to comply could result in death or serious injury.</i>
3	⚠ WARNING	NEVER use the Meyer plow without first CAREFULLY reading the Owner's Manual. It is CRITICAL for your safety to ALWAYS obey EVERY warning in the manual and follow EVERY instruction EXPLICITLY . Failure to comply could result in death or serious injury.
4	⚠ WARNING	<i>The Meyer plow should be used by drivers with a valid operator's license. Keep all body parts inside the vehicle. Failure to comply could result in death or serious injury.</i>
5	⚠ WARNING	<i>The Meyer plow should NEVER be used for ANY other purpose other than plowing snow, using the Meyer plow for other purposes could result in serious injury or death.</i>
6	⚠ WARNING	<i>Inspect plow assembly and mounting components and fasteners for wear and damage before and after each use. Worn or damaged components or fasteners could allow the plow to drop unexpectedly. Failure to comply could result in death or serious injury.</i>
7	⚠ WARNING	<i>Do not change plow position while traveling. You could suddenly lower the plow accidentally. Failure to comply could result in death or serious injury.</i>
8	⚠ WARNING	<i>ALWAYS wear a seat belt when plowing snow. Hidden obstructions can cause the vehicle to stop suddenly resulting in personal injury. Failure to comply could result in death or serious injury.</i>
9	⚠ WARNING	<i>Do not mix different kinds of hydraulic fluid. Some fluids are not compatible and may cause performance problems and product damage Failure to comply could result in death or serious injury.</i>
10	⚠ WARNING	<i>NEVER perform any repairs or maintenance with the plow controller turned on and the plow plugged into the vehicle harness and the plow attached to the vehicle. Failure to comply could result in death or serious injury.</i>
11	⚠ WARNING	<i>The vehicle must not be operated when overloaded. In all cases, the loaded vehicle weight, including the entire snow plow system, all aftermarket accessories, driver, passenger, options, nominal fluid levels, and cargo must not exceed the front/rear Gross Axle Weight Rating (GAWR), and total Gross Vehicle Weight Rating (GVWR). These weights ratings are specified on the safety compliance certification label on the driver's side door opening. The use of rear ballast weight may be required to prevent exceeding the front GAWR. Failure to comply could result in death or serious injury.</i>
12	⚠ WARNING	<i>Read the Meyer Plow Owner's Manual before operating or servicing a snow plow. FOLLOW THESE INSTRUCTIONS EXPLICITLY. Failure to comply could result in death or serious injury.</i>
13	⚠ WARNING	SAFETY PRECAUTIONS should be used when Hydraulic Unit is in OPERATION and plow is in a RAISED position. Lower plow to ground when vehicle is PARKED in case of hydraulic failure. Failure to comply could result in death or serious injury.
14	⚠ WARNING	<i>Remove Plow Assembly before placing vehicle on hoist/lift. Failure to comply could result in death or serious injury.</i>
15	⚠ WARNING	<i>Do not exceed 40 mph transporting plow. Do not exceed 20 mph plowing snow. Know your road conditions at all times. Keep feet clear of moldboard at all times. Failure to comply could result in death or serious injury.</i>

Safety Definitions & Warnings

16	 WARNING	SAFETY PRECAUTIONS should be used when Hydraulic Unit is SERVICED. Hydraulic fluid under pressure can cause skin injection injury. If you are injured by hydraulic fluid, get medical attention immediately. Failure to comply could result in death or serious injury.
17	 WARNING	Vehicle exhaust contains lethal fumes. Breathing these fumes, even in low concentrations, can cause death. Never operate vehicle in an enclosed area without venting the exhaust to the outside. Failure to comply could result in death or serious injury.
18	 WARNING	Gasoline is highly flammable and gasoline vapor is explosive. Never smoke while working on vehicle. Keep all open flames away from gasoline tank and lines. Wipe up any spilled gasoline immediately. Failure to comply could result in death or serious injury.
19	 CAUTION	Flag obstructions that are under snow to prevent damage to product or property. Failure to comply may result in minor or moderate injury.
20	 CAUTION	A ballast weight may be required to prevent front GAWR overloading. If required, ballast must be securely attached at least 24 inches behind the rear axle. Failure to comply will result in property damage.
21	 CAUTION	Batteries normally produce explosive gases which can cause personal injury. Therefore, do not allow flames, sparks or lit tobacco to come near the battery. When charging or working near a battery, always cover your face and protect your eyes, and also provide ventilation. Batteries contain sulfuric acid which burns skin, eyes and clothing. Failure to comply will result in property damage.
22	 CAUTION	See your Meyer plow Authorized Distributor/Web site for specific vehicle application recommendations before installation. Failure to comply will result in property damage.
23	 CAUTION	Installation of a snow plow may affect your new vehicle warranty. For more information consult your Vehicle Owner's Manual / Vehicle Dealer. Failure to comply will result in property damage.
24	 CAUTION	Warranty does not apply to a Meyer plow product which has been negligently or improperly assembled or installed. Failure to comply will result in property damage.
25	 CAUTION	CAUTION: To avoid harm to vehicles electrical system always disconnect battery before beginning installation. DO NOT BURN holes or WELD vehicle frame. This may cause frame failure. Failure to comply will result in property damage.
26	 CAUTION	A driver's first responsibility is the safe operation of the vehicle and snow plow. The most important thing you can do to prevent a crash is to avoid distractions and pay attention to the road. Wait until it is safe to operate mobile communication equipment such as cell phones, two way radios, etc. Failure to comply will result in property damage.
27	 CAUTION	Front end wheel alignment and headlight aim may require readjustment after installation of equipment, and is the responsibility of the equipment installer. Failure to adjust front wheel alignment may cause premature uneven tire wear. If required, reset to chassis manufacture's specifications. Failure to comply will result in property damage.
28	 CAUTION	The Meyer Products' electrical and hydraulic system contains several automotive style fuses. If a problem should occur and fuse replacement is necessary, the replacement fuse must be of the same type and amperage rating as the original. Installing a fuse with a higher rating can damage the system and could cause a fire.

SAFETY DEFINITIONS



This is the safety alert symbol. It is used to alert you to potential personal injury hazards. Obey all safety messages that follow this symbol to avoid possible injury or death.



DANGER Indicates an imminently hazardous situation which, if not avoided, will result in death or serious injury.



WARNING Indicates a potentially hazardous situation which, if not avoided, could result in death or serious injury.



CAUTION Indicates a potentially hazardous situation which, if not avoided, may result in minor or moderate injury.



CAUTION used without the safety alert symbol indicates a potentially hazardous situation which, if not avoided, will result in property damage.

Introduction

Snow, despite the beauty it may impart to a bleak winter landscape, poses the dual threat of inconvenience and danger. The environmental conditions associated with snow, not to mention the health hazards and economic loss it may impose, seriously endanger thousands of lives annually. Business and industry suffer, and millions of snowbelt residents may be affected by a single snowstorm.

Meyer Products LLC has published this manual to help you get maximum performance from your Meyer Snow Plow and familiarize you with the features designed for efficiency and safety; be sure you recognize and understand them. Follow recommended operation and maintenance instructions, so when the storm hits, your Meyer Snow Plow will be ready and you will know how to plow like a pro.

DO NOT EQUIP ANY VEHICLE WITH A SNOW PLOW WITHOUT CONSULTING MANUFACTURERS' RECOMMENDATIONS.

Vehicles with Meyer Snow Plows installed may be so equipped as to meet vehicle manufacturers' specifications and recommended options for snow plowing use. **Most vehicle manufacturers insist that vehicles which are to be used for snow plowing be equipped**

with certain options and accessories, and it is so stated in vehicle manufacturer specifications for snow plow application.

WARNING: Deployment of an air bag while using a Meyer Snow Plow will not be covered under Meyer Products' warranty. We also recommend that, for optimum performance, vehicles used for snow plowing be equipped with:

- Four-Wheel Drive
- Minimum 60 Amp Alternator or larger
- Minimum 70 Amp Battery or larger (550 C.C.A.)
- Mud and Snow Tires
- Increased Radiator Cooling
- Automatic Transmission
- Power Brakes
- Power Steering

Under the continuing Meyer Product Improvement Plan, Meyer Products LLC reserves the right to change design details and construction without prior notice and without incurring any obligation.

EC Declaration of Conformity

EC DECLARATION OF CONFORMITY

The undersigned representing the manufacturer

and the authorized representative
established within the community

herewith declared that the Product: **Snow & Ice Equipment**

Model/Type ref.:

is in conformity with the Essential requirements of the following EC Directives when subject to correct installation, maintenance and use conforming to its(their)intended purpose, to the applicable regulations and standards, to our operation and maintenance manual.

2006/95/EC	EC Low Voltage Directive
2004/108/EC	EMC Directive
2006/42/EC	Machinery Directive

and that the Standards and/or technical specifications referenced below have been applied:

- χ BS EN 60204-1:2006 / IEC 60204-1:2005: Safety of machinery – Electrical equipment of machines-Part 1: General requirements.
- χ EN ISO 12100-1:2003:Safety of Machinery – Basic Concepts, General Principles of Design Part 1: Basic Terminology and Methodology
- χ EN ISO 12100-2:2003:Safety of Machinery – Basic Concepts, General Principles of Design Part 2: Technical principles
- χ EN 13021:2003+A1- Winter service machines - Safety requirements
- χ EN 61000-6-2: 2005. Generic standards – Immunity for Industrial Environments.
- χ EN 61000-6-4:2005. Generic emission standard, Part 2: Industrial environment.

Year of CE Marking:

Manufacturer:


Authorized Representative in the community:

Signature

Position

Date

Place


FRANK JES, INC. *Marks 57*
5-14-2010
CLEVELAND, OHIO

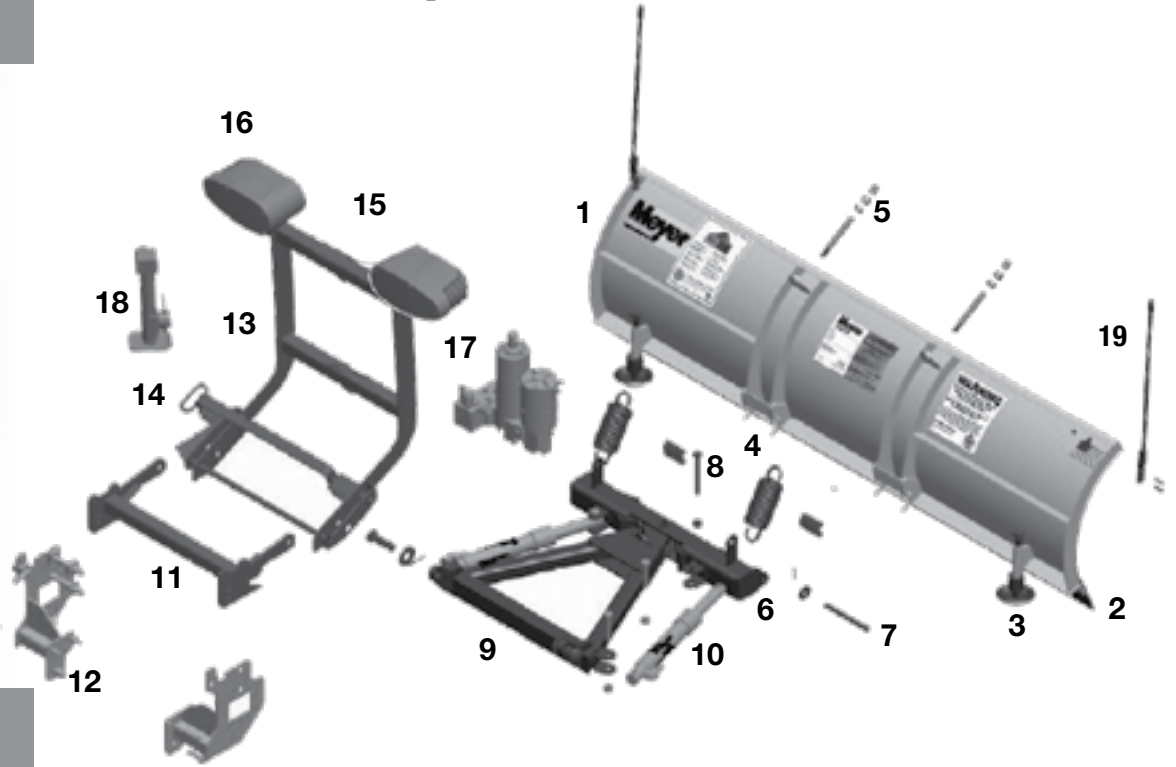
Signature

Position

Date

Place

Drive Pro Component Identification



Drive Pro Component Identification



1. Moldboard – Steel or Polyethylene moldboard sheet is impact and corrosion resistant.

2. Cutting Edge – Replaceable high carbon steel provides extra long operating life; should be 1/2" above ground in plowing position. (Can be higher when used on gravel driveways.) Available in Urethane or Rubber.

3. Runners/Shoes – Adjustable and replaceable runners position cutting edge at proper height, as required.

4. Trip Springs – Allow moldboard to trip forward and ride over obstructions, this protects the snow plow, vehicle, and operator.

5. Eye Bolts – Adjusts Trip Spring to their proper tension (coils should just begin to separate).

6. Pivot Bar – Heavy-duty highway plow design provides durability with three push/connect points to the moldboard.

7. Pivot Pin – Pin that secures the moldboard to the Pivot Bar.

8. King Bolt – Heavy-duty high grade bolt that attaches A-Frame to the Pivot Bar.

9. A-Frame – Designed to attach the snow plow to the vehicle, to pivot moldboard for angle plowing, and to hold plow at proper distance in front of vehicle.

10. Power Angling Cylinders – Heavy-duty winter specified hydraulics to move the plow left or right.

11. Clevis Frame – Allows snow plow assembly to be attached or detached from vehicle in minutes.

12. Mounting Frame – Custom mount designed to fit the plow system to your vehicle.

13. Lift Frame – Allows for fast, complete removal of front end hardware, snow plow, lights and hydraulic unit in one complete module.

14. Single Lever Dismount System – Pull handle to release plow system for easy on/off.

15. Lift Arm – Holds Chain to lift snow plow. **WARNING: LIFT ARM EXTENDS BEYOND BUMPER OF VEHICLE. TO MINIMIZE DAMAGE FROM A FRONT END COLLISION, LIFT ARM SHOULD BE REMOVED FROM VEHICLE WHEN SNOW PLOW IS REMOVED.**

16. Meyer Nite Saber®/Nite Saber II® Snow Plow Lights – Complies with the Federal Motor Vehicle Safety Standards.

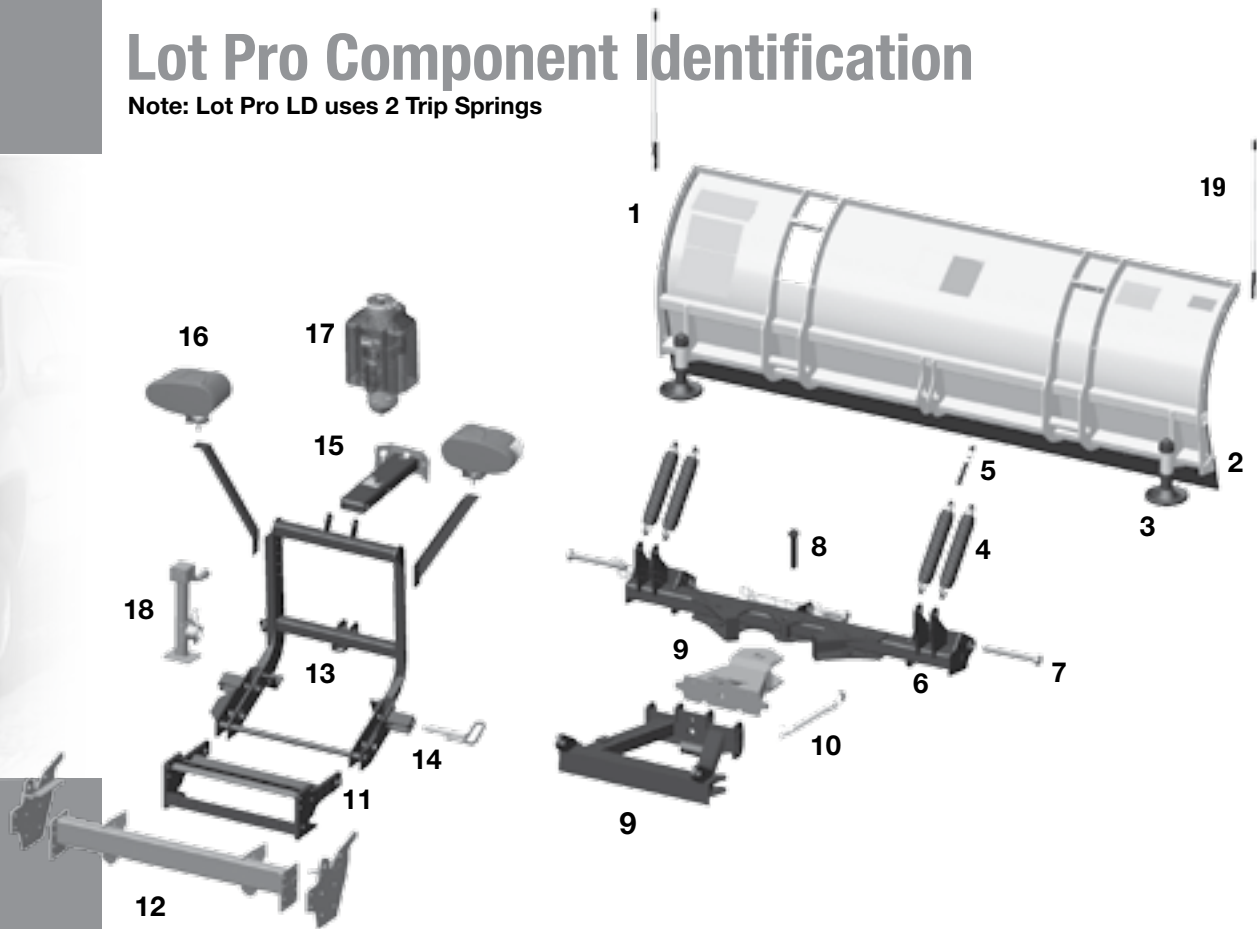
17. Hydraulic Power Unit and Lift Cylinder – Operates snow plow hydraulically- raises, lowers, angles, holds and floats moldboard in plowing position.

18. Crankstand – Positions Moldboard and Lift Frame for easy attaching and detaching. Adjusts plow height in varying ground conditions for easy mount/dismount.

19. Plow Markers – Attach to corner of moldboard providing line of site to the operator.

Lot Pro Component Identification

Note: Lot Pro LD uses 2 Trip Springs



Lot Pro Component Identification



1. Moldboard – Steel, Stainless Steel or Polyethylene moldboard sheet is impact and corrosion resistant.

2. Cutting Edge – Replaceable high carbon steel provides extra long operating life; should be 1/2" above ground in plowing position. (Can be higher when used on gravel driveways.) Available in Urethane or Rubber.

3. Runners/Shoes – Adjustable and replaceable runners position cutting edge at proper height, as required.

4. Trip Springs – Allow moldboard to trip forward and ride over obstructions, this protects the snow plow, vehicle, and operator. Note: Lot Pro LD uses 2 Trip Springs.

5. Eye Bolts – Adjusts Trip Spring to their proper tension (coils should just begin to separate).

6. Pivot Bar – Heavy-duty highway plow design provides durability with three push/connect points to the moldboard.

7. Pivot Pin – Pin that secures the moldboard to the Pivot Bar.

8. King Bolt – Heavy-duty high grade bolt that attaches A-Frame to the Pivot Bar.

9. A-Frame – Designed to attach the snow plow to the vehicle, to pivot moldboard for angle plowing, and to hold plow at proper distance in front of vehicle.

10. Power Angling Cylinders – Heavy-duty winter specified hydraulics to move the plow left or right.

11. Clevis Frame – Allows snow plow assembly to be attached or detached from vehicle in minutes.

12. Mounting Frame – Custom mount designed to fit the plow system to your vehicle.

13. Lift Frame – Allows for fast, complete removal of front end hardware, snow plow, lights and hydraulic unit in one complete module.

14. Dual Lever Dismount System – Pull handle to release plow system for easy on/off.

15. Lift Arm – Holds Dual Chain to lift snow plow. **WARNING: LIFT ARM EXTENDS BEYOND BUMPER OF VEHICLE. TO MINIMIZE DAMAGE FROM A FRONT END COLLISION, LIFT ARM SHOULD BE REMOVED FROM VEHICLE WHEN SNOW PLOW IS REMOVED.**

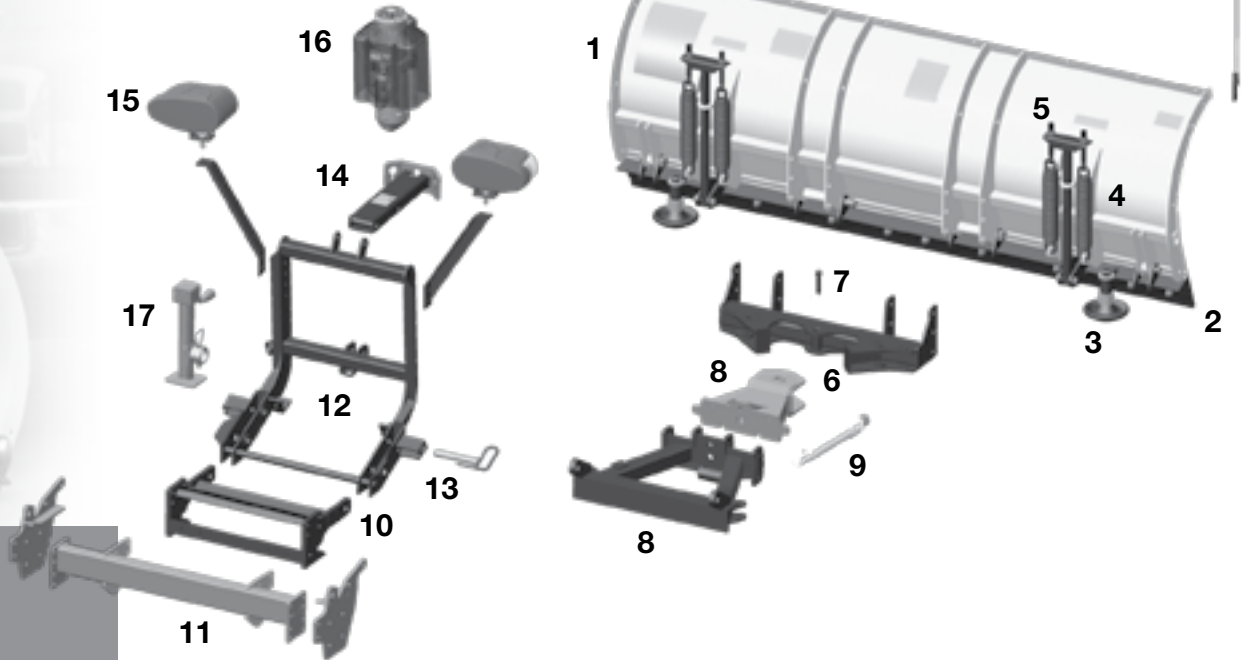
16. Meyer Nite Saber®/Nite Saber II® Snow Plow Lights – Complies with the Federal Motor Vehicle Safety Standards.

17. Hydraulic Power Unit – Operates snow plow hydraulically- raises, lowers, angles, holds and floats moldboard in plowing position.

18. Crankstand – Positions Moldboard and Lift Frame for easy attaching and detaching. Adjusts plow height in varying ground conditions for easy mount/dismount.

19. Plow Markers – Attach to corner of moldboard providing line of site to the operator.

Diamond Edge Component Identification



Diamond Edge Component Identification

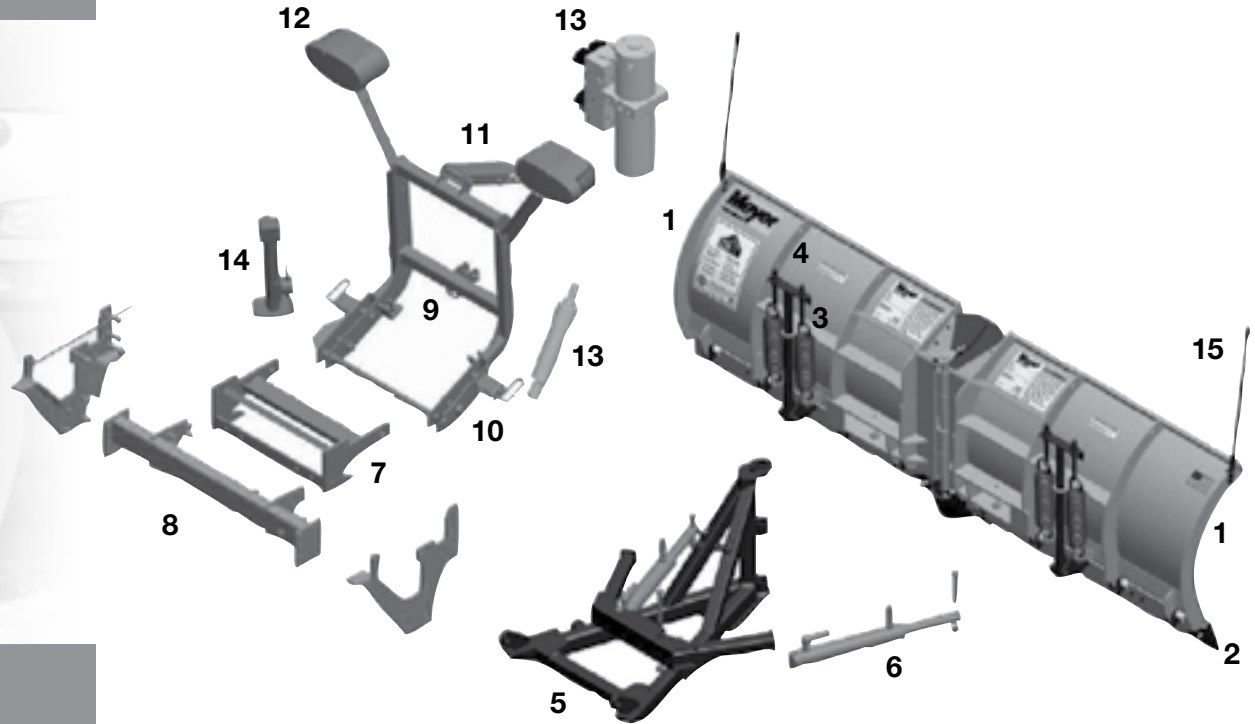


- 1. Moldboard** – Steel moldboard sheet is impact and corrosion resistant.
- 2. Cutting Edge** – Replaceable high carbon steel provides extra long operating life; should be 1/2" above ground in plowing position. (Can be higher when used on gravel driveways.) Available in Urethane or Rubber.
- 3. Runners/Shoes** – Adjustable and replaceable runners position cutting edge at proper height, as required.
- 4. Trip Springs** – Allow trip edge to trip back and ride over obstructions, this protects the snow plow, vehicle, and operator.
- 5. Eye Bolts** – Adjusts Trip Spring to their proper tension (coils should just begin to separate).
- 6. Pivot Bar** – Heavy-duty highway plow design provides durability with three push/connect points to the moldboard.
- 7. King Bolt** – Heavy-duty high grade bolt that attaches A-Frame to the Pivot Bar.

- 8. A-Frame** – Designed to attach the snow plow to the vehicle, to pivot moldboard for angle plowing, and to hold plow at proper distance in front of vehicle.
- 9. Power Angling Cylinders** – Heavy-duty winter specified hydraulics to move the plow left or right.
- 10. Clevis Frame** – Allows snow plow assembly to be attached or detached from vehicle in minutes.
- 11. Mounting Frame** – Custom mount designed to fit the plow system to your vehicle.
- 12. Lift Frame** – Allows for fast, complete removal of front end hardware, snow plow, lights and hydraulic unit in one complete module.
- 13. Dual Lever Dismount System** – Pull handle to release plow system for easy on/off.
- 14. Lift Arm** – Holds Dual Chain to lift snow plow. **WARNING: LIFT ARM EXTENDS BEYOND BUMPER OF VEHICLE. TO MINIMIZE DAMAGE FROM A FRONT END COLLISION, LIFT ARM SHOULD BE REMOVED FROM VEHICLE WHEN SNOW PLOW IS REMOVED.**

- 15. Meyer Nite Saber®/Nite Saber II® Snow Plow Lights** – Complies with the Federal Motor Vehicle Safety Standards.
- 16. Hydraulic Power Unit** – Operates snow plow hydraulically- raises, lowers, angles, holds and floats moldboard in plowing position.
- 17. Crankstand** – Positions Moldboard and Lift Frame for easy attaching and detaching. Adjusts plow height in varying ground conditions for easy mount/dismount.
- 18. Plow Markers** – Attach to corner of moldboard providing line of site to the operator.

Super-V/V² & SV^{LD} Component Identification



Super-V/V² & SV^{LD} Component Identification



1. Wing – Steel moldboard sheet is impact and corrosion resistant.

2. Cutting Edge – Replaceable high carbon steel provides extra long operating life; should be 1/2” above ground in plowing position. (Can be higher when used on gravel driveways.) Also available in Urethane or Rubber.

3. Trip Springs – Allow trip edge to trip back and ride over obstructions, this protects the snow plow, vehicle, and operator.

4. Eye Bolts – Adjusts Trip Spring to their proper tension (coils should just begin to separate).

5. A-Frame – Designed to attach the snow plow to the vehicle, to pivot moldboard for angle plowing, and to hold plow at proper distance in front of vehicle.

6. Double Acting Power Angling Cylinders – Hydraulically positions the moldboard/Wings straight, or to right or left. Dual acting cylinder pushes the plow forward and also pulls the plow wings backward. Holds wings in locked position.

7. Clevis Frame – Allows snow plow assembly to be attached or detached from vehicle in minutes.

8. Mounting Frame – Custom mount designed to fit the plow system to your vehicle.

9. Lift Frame – Allows for fast, complete removal of front end hardware, snow plow, lights and hydraulic unit in one complete module.

10. Single Lever Dismount System – Pull handle to release plow system for easy on/off.

11. Lift Arm – Holds Dual Chain locks in position to lift snow plow. **WARNING: LIFT ARM EXTENDS BEYOND BUMPER OF VEHICLE. TO MINIMIZE DAMAGE FROM A FRONT END COLLISION, LIFT ARM SHOULD BE REMOVED FROM VEHICLE WHEN SNOW PLOW IS REMOVED.**

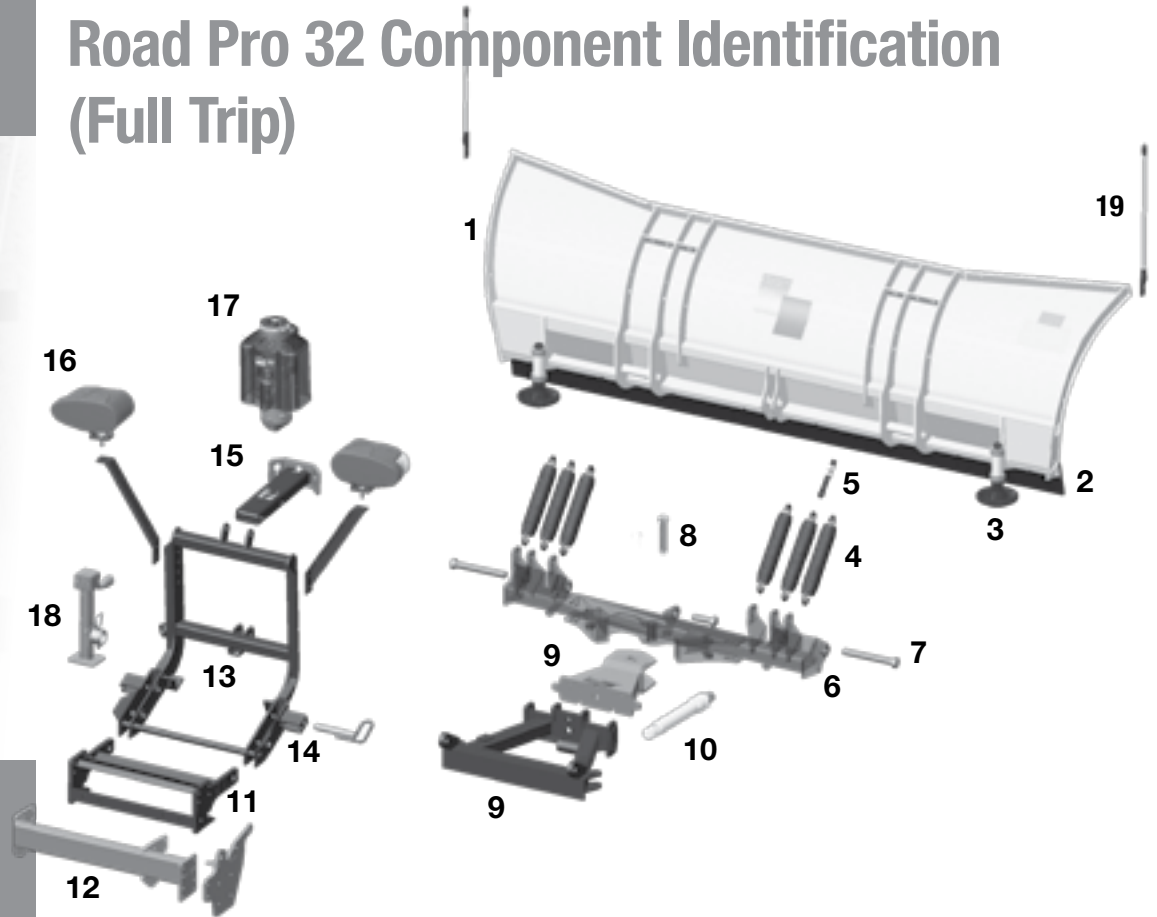
12. Meyer Nite Saber®/Nite Saber II® Snow Plow Lights – Complies with the Federal Motor Vehicle Safety Standards.

13. Hydraulic Power Unit and Lift Cylinder – Operates snow plow hydraulically- raises, lowers, angles, holds and floats moldboard in plowing position.

14. Crankstand/Jackstand – Positions Moldboard and Lift Frame for easy attaching and detaching. Adjusts plow height in varying ground conditions for easy mount/dismount.

15. Plow Markers – Attach to corner of moldboard providing line of site to the operator.

Road Pro 32 Component Identification (Full Trip)



Meyer
ROAD PRO

Road Pro 32 Component Identification



1. Moldboard – Steel or Polyethylene moldboard sheet is impact and corrosion resistant.

2. Cutting Edge – Replaceable high carbon steel provides extra long operating life; should be 1/2" above ground in plowing position. (Can be higher when used on gravel driveways.) Available in Urethane, Rubber or Carbide.

3. Runners/Shoes – Adjustable and replaceable runners position cutting edge at proper height, as required.

4. Trip Springs – Allow moldboard or cutting edge to trip forward and ride over obstructions, this protects the snow plow, vehicle, and operator.

5. Eye Bolts – Adjusts Trip Spring to their proper tension (coils should just begin to separate).

6. Pivot Bar – Heavy-duty highway plow design provides durability with three push/ connect points to the moldboard.

7. Pivot Pins – Pins that secures the moldboard to the Pivot Bar.

8. King Bolt – Heavy-duty high grade bolt that attaches A-Frame to the Pivot Bar.

9. A-Frame – Designed to attach the snow plow to the vehicle, to pivot moldboard for angle plowing, and to hold plow at proper distance in front of vehicle.

10. Power Angling Cylinders – Heavy-duty winter specified hydraulics to move the plow left or right.

11. Clevis Frame – Allows snow plow assembly to be attached or detached from vehicle in minutes.

12. Mounting Frame – Custom mount designed to fit the plow system to your vehicle.

13. Lift Frame – Attaches to the vehicle.

14. Dual Lever Dismount System – Pull handle to release plow system for easy on/off.

15. Lift Arm – Hold Dual Chain to lift snow plow. **WARNING: LIFT ARM EXTENDS BEYOND BUMPER OF VEHICLE. TO MINIMIZE DAMAGE FROM A FRONT END COLLISION, LIFT ARM SHOULD BE REMOVED FROM VEHICLE WHEN SNOW PLOW IS REMOVED.**

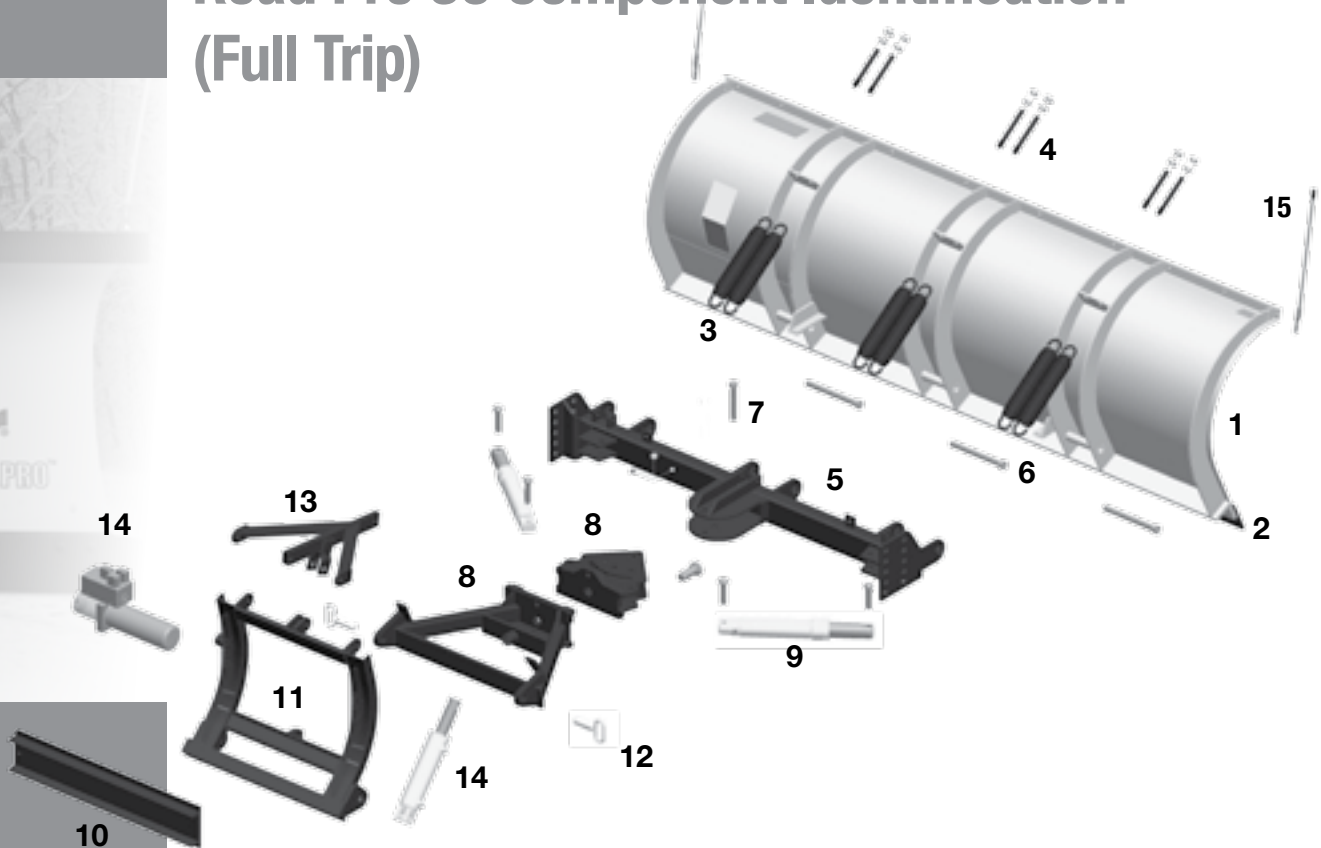
16. Meyer Nite Saber®/Nite Saber II® Snow Plow Lights – Complies with the Federal Motor Vehicle Safety Standards.

17. Hydraulic Power Unit – Operates snow plow hydraulically- raises, lowers, angles, holds and floats moldboard in plowing position. (Optional)

18. Crankstand/Jackstand – Positions Moldboard and Lift Frame for easy attaching and detaching. Adjusts plow height in varying ground conditions for easy mount/dismount.

19. Plow Markers – Attach to corner of moldboard providing line of site to the operator.

Road Pro 36 Component Identification (Full Trip)



Meyer
ROAD PRO

Road Pro 36 Component Identification



1. Moldboard – Steel or Polyethylene moldboard sheet is impact and corrosion resistant.

2. Cutting Edge – Replaceable high carbon steel provides extra long operating life; should be 1/2” above ground in plowing position. (Can be higher when used on gravel driveways.) Available in Urethane, Rubber or Carbide.

3. Trip Springs – Allow moldboard or cutting edge to trip forward and ride over obstructions, this protects the snow plow, vehicle, and operator.

4. Eye Bolts – Adjusts Trip Spring to their proper tension (coils should just begin to separate).

5. Pivot Bar – Heavy-duty highway plow design provides durability with three push/connect points to the moldboard.

6. Pivot Pins – Pins that secures the moldboard to the Pivot Bar.

7. King Bolt – Heavy-duty high grade bolt that attaches A-Frame to the Pivot Bar.

8. A-Frame – Designed to attach the snow plow to the vehicle, to pivot moldboard for angle plowing, and to hold plow at proper distance in front of vehicle.

9. Power Angling Cylinders – Heavy-duty winter specified hydraulics to move the plow left or right.

10. Mounting Frame – Custom mount designed to fit the plow system to your vehicle.

11. Lift Frame – Attaches to the vehicle.

12. Plow Pin – Connects plow to lift frame.

13. Lift Arm – Hold Dual Chain to lift snow plow. **WARNING: LIFT ARM EXTENDS BEYOND BUMPER OF VEHICLE. TO MINIMIZE DAMAGE FROM A FRONT END COLLISION, LIFT ARM SHOULD BE REMOVED FROM VEHICLE WHEN SNOW PLOW IS REMOVED.**

14. Hydraulic Power Unit and Lift Cylinder – Operates snow plow hydraulically- raises, lowers, angles, holds and floats moldboard in plowing position. (Optional)

15. Plow Markers – Attach to corner of moldboard providing line of site to the operator.

Pistol Grip Controller 22690DC

The snow plow should only be in operation when the vehicle ignition switch and the control switch are in the "ON" position. Care should be taken to insure that the control switch is kept dry and free from moisture during normal operation.

"By tapping the ON/OFF pad once, it will turn ON the snow plow headlights only. The plow will be OFF. The ON/OFF pad will illuminate AMBER. By tapping the ON/OFF pad again it will turn OFF the headlamps and the pad illumination. When the ON/OFF pad is continuously depressed for more than 1 second, it will turn ON the plow control switch and the snow plow headlights. The pads will illuminate GREEN showing the location of the individual touch pads for the functions of the snow plow Raise, Angle Left, Angle Right and Lower. By continuously depressing the ON/OFF pad a second time for more than 1 second, it will turn OFF the plow control switch, snow plow headlights and the Green pad illumination."

Lowering of the snow plow an inch at a time is possible by tapping the Lower arrow in short intervals. Holding down the Lower arrow will activate a float light located in the upper right corner of the control switch. This light indicates the snow plow is now in the Lower/Float position. In this position the snow plow will be able to follow the contour of the road and the snow plow can also be angled to the left or right. Touching the Raise arrow automatically cancels the Lower/Float position.

While angling left or right or raising the snow plow if the button is pressed for more than four seconds the operation will be cancelled. This feature eliminates unnecessary amp draw from the vehicle charging system.

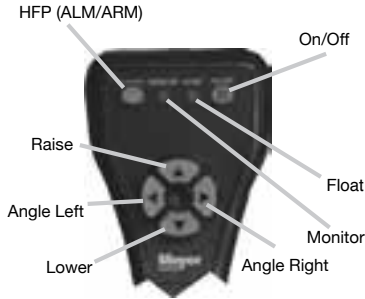
"By double clicking the Raise, Angle Left, Angle Right or Lower arrows quickly, the control switch will automatically move the plow to the maximum desired position then stop."

Hands-Free Plowing or ALM/ARM

Meyer re-branded the ALM/ARM feature on its 22690DC controllers to be Hands-Free Plowing (HFP)™. When activated, the Hands-Free Plowing (HFP) mode uses the vehicle's shift lever to control the up/down movement of the moldboard. Pressing the HFP button on the controller will toggle you through: On/Off, Back-drag Mode (default mode when active), and Forward Plowing Mode.

Back-dragging Mode or ALM

When the controller is on and you are in the conventional plow control mode, pressing the HFP button will activate Hands-Free Plowing (HFP). The default mode for HFP is the Back-drag Mode. In the Back-drag Mode, the moldboard will automatically lower when you put the vehicle in reverse. Put the vehicle in drive to automatically raise the moldboard.



Model 22690

Pistol Grip Controller 22690DC

The snow plow should only be in operation when the vehicle ignition switch and the control switch are in the "ON" position. Care should be taken to insure that the control switch is kept dry and free from moisture during normal operation.

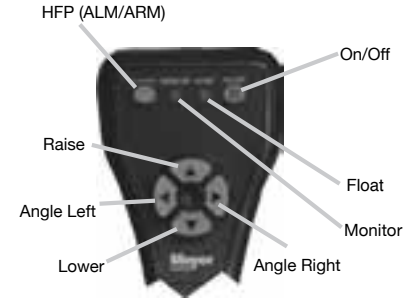
Forward Plowing Mode or ARM

To activate the Forward Plowing Mode when HFP is already on, press the HFP button once. The moldboard will automatically lower when you put the truck into drive. When you reach the end of a run, the moldboard will automatically raise when you put the vehicle in reverse.

To turn the HFP feature off, press the HFP button until you see the HFP light go off.

This switch is self diagnosing. The monitor light is located in the upper left corner next to the float light of the control switch. When the monitor light turns on and begins to flash the control switch is sensing a problem with a specific coil/connection on the hydraulic unit. The label below is on the back side of your control switch.

Reset is accomplished by turning off the ignition switch or by turning the power switch off momentarily and then back on. If the monitor light is still illuminated after attempts to reset the switch have failed, contact your nearest authorized Meyer Distributor for repairs.



Systems Monitor LED Read-Out

Light Flashes Check Coil (wire Color)

Continuous Light -----	Motor Solenoid
1 Light Flash -----	Red
2 Light Flashes -----	Black
3 Light Flashes -----	Green
4 Light Flashes -----	Yellow
5 Light Flashes -----	Lt. Blue
6 Light Flashes -----	Purple

(Imprinted on back of controller)

Pistol Grip Deluxe Controller 22695DC/22869DC

The snow plow should only be in operation when the vehicle ignition switch and the control switch are in the "ON" position. Care should be taken to insure that the control switch is kept dry and free from moisture during normal operation.

By tapping the ON/OFF pad once, it will turn ON the snow plow headlights only. The plow will be OFF. The ON/OFF pad will illuminate AMBER. By tapping the ON/OFF pad again, it will turn OFF the headlights and the pad illumination. When the ON/OFF pad is continuously depressed for more than 1 second, it will turn ON the plow control switch and the snow plow headlights. The pads will illuminate GREEN showing the location of the individual touch pads for the functions of the snow plow Up, Angle Left, Angle Right, Left Extend (V only), Left Retract (V only), Right Extend (V only), Right Retract (V only), Scoop (V only), Vee (V only) and Down. By continuously depressing the ON/OFF pad a second time for more than 1 second, it will turn OFF the plow control switch, snow plow headlights and the GREEN pad illumination. This switch has an auto detect feature which allows it to operate either the E-58H, E-70, E-72 or V-70 unit.

Lowering of the snow plow an inch at a time is possible by tapping the down arrow in short intervals. Holding down the down arrow will activate a float light located in the upper right corner of the control switch. This light indicates the snow plow is now in the Lower/Float position. In this position the snow plow will be able to follow the contour of the road and the snow plow can also be angled to the left or right. Touching the up arrow automatically cancels the Lower/Float position.

While angling left or right or raising the snow plow if the button is pressed for more than six seconds the operation will be cancelled. This feature eliminates unnecessary amp draw from the vehicle charging system.

By double tapping the Up, Angle Left, Angle Right, Left Extend (V only), Left Retract (V only), Right Extend (V only), Right Retract (V only), Scoop (V only), Vee (V only) and Down arrows quickly, the control switch will automatically move the plow to the maximum desired position then stop.

Hands-Free Plowing or ALM/ARM

Meyer re-branded the ALM/ARM feature on its 22695DC controllers to be Hands-Free Plowing (HFP)™. When activated, the Hands-Free Plowing (HFP) mode uses the vehicle's shift lever to control the up/down movement of the moldboard. Pressing the HFP button on the controller will toggle you through: On/Off, Back-drag Mode (default mode when active), and Forward Plowing Mode.

Pistol Grip Deluxe Controller 22695DC/22869DC

The snow plow should only be in operation when the vehicle ignition switch and the controller are in the "ON" position. Care should be taken to insure that the controller is kept dry and free from moisture during normal operation.

Back-dragging Mode or ALM

When the controller is on and you are in the conventional plow control mode, pressing the HFP button will activate Hands-Free Plowing (HFP). The default mode for HFP is the Back-drag Mode. In the Back-drag Mode, the moldboard will automatically lower when you put the vehicle in reverse. Put the vehicle in drive to automatically raise the moldboard.

Forward Plowing Mode or ARM

To activate the Forward Plowing Mode when HFP is already on, press the HFP button once. The moldboard will automatically lower when you put the truck into drive. When you reach the end of a run, the moldboard will automatically raise when you put the vehicle in reverse.

To turn the HFP feature off, press the HFP button until you see the HFP light go off.

This switch is self diagnosing. The monitor light is located in the upper left corner next to the float light of the control switch. When the monitor light turns on and begins to flash the control switch is sensing a problem with a specific coil/connection on the hydraulic unit. The label below is on the back side of your control switch.

Reset is accomplished by turning off the ignition switch or by turning the power switch off momentarily and then back on. If the monitor light is still illuminated after attempts to reset the switch have failed, contact your nearest authorized Meyer Distributor for repairs.

When the controller is turned on it will activate the snow plow lights. When the controller is turned off or removed from the harness this will activate the vehicle headlights.

Note: 22869DC can only be used with the V-71 unit.



Systems Monitor LED Read-Out

Light Flashes Check Coil (wire Color)

Continuous Light -----	Motor Solenoid
1 Light Flash -----	Red
2 Light Flashes -----	Black
3 Light Flashes -----	Green
4 Light Flashes -----	Yellow
5 Light Flashes -----	Lt. Blue
6 Light Flashes -----	Purple

(Imprinted on back of controller)

Joy Stick Controller 22790X

The snow plow should only be in operation when the vehicle ignition switch and the controller are in the "ON" position. Care should be taken to insure that the controller is kept dry and free from moisture during normal operation.

When the controller is turned "On," lights illuminate the Joystick for the functions of the snow plow: Up, Angle Left, Angle Right, Scoop, Vee and Down. The 22790X controller has an auto detect feature which allows it to operate either the E-58, E-72 or V-70 units.

Lowering of the snow plow an inch at a time is possible by tapping the Joystick down direction in short intervals. Holding down the Joystick will activate a float light and illuminate the joystick blue. This light indicates the snow plow is now in the Lower/Float position. In this position the snow plow will be able to follow the contour of the road and the snow plow can also be angled to the left or right. Touching the Joystick in the up direction automatically cancels the Lower/Float position.

While angling left, right or raising the snow plow if the Joystick is pressed for more than four seconds the operation will be cancelled. This feature eliminates unnecessary amp draw from the vehicle charging system.

Back-dragging Mode When the controller is on and you are in the conventional plow control mode, pressing the HFP button will activate Hands-Free Plowing (HFP). The default mode for HFP is the Back-drag Mode. In the Back-drag Mode, the moldboard will automatically lower when you put the vehicle in reverse. Put the vehicle in drive to automatically raise the moldboard.

Forward Plowing Mode To activate the Forward Plowing Mode when HFP is already on, press the HFP button once. The moldboard will automatically lower when you put the truck into drive. When you reach the end of the run, the moldboard will automatically raise when you put the vehicle in reverse.

To turn the HFP feature off, press the HFP button until you see the HFP light goes off.

*Controller defaults to on/off mode when powered down.

Joy Stick Controller 22790X

The snow plow should only be in operation when the vehicle ignition switch and the controller are in the "ON" position. Care should be taken to insure that the controller is kept dry and free from moisture during normal operation.

Imprinted on backside of Controllers (22790X)

This controller is self diagnosing. The monitor light illuminates the Joystick red. When the Joystick illuminates red and begins to flash the controller is sensing a problem with a specific coil/connection on the hydraulic unit. The label below is on the back side of your controller (see below). Reset is accomplished by turning off the ignition switch or by turning the power switch off on the controller momentarily and then back on. If the Joystick is still illuminated red after attempts to reset the controller have failed, contact your nearest authorized Meyer Distributor for repairs.

When the controller is turned on it will activate the snow plow lights. When the controller is turned off or removed from the harness this will activate the vehicle headlights.

Systems Monitor LED Read-Out

Light Flashes Check Coil (wire Color)

Continuous Light -----	Motor Solenoid
1 Light Flash -----	Red
2 Light Flashes -----	Black
3 Light Flashes -----	Green
4 Light Flashes -----	Yellow
5 Light Flashes -----	Lt. Blue
6 Light Flashes -----	Purple

(Imprinted on back of controller)

The snow plow should only be in operation when the vehicle ignition switch and the control switch are in the "ON" position. Care should be taken to insure that the control switch is kept dry and free from moisture during normal operation.

When the control switch is turned "On," lights illuminate the location of the individual touch pads for the functions of the snow plow: (Up), (Angle Left), (Angle Right) and (Down).

Lowering of the snow plow an inch at a time is possible by tapping the down arrow in short intervals. Holding down the down arrow will activate a float light located in the upper left corner of the control switch. This light indicates the snow plow is now in the Lower/Float position. In this position the snow plow will be able to follow the contour of the road and the snow plow can also be angled to the left or right. Touching the up arrow automatically cancels the Lower/Float position.

This switch is self diagnosing. The monitor light is located in the upper left corner below the float light of the control switch. When the monitor light turns on and begins to flash the control switch is sensing a problem with a specific coil/connection on the hydraulic unit. The diagnostic label is on the back side of your control switch.

Reset is accomplished by turning off the ignition switch or by turning the power switch off momentarily and then back on. If the monitor light is still illuminated after attempts to reset the switch have failed, contact your nearest authorized Meyer Distributor for repairs.



* Also known as ALM/ARM

Joy Stick
Model 22790X



Controller only - Model E-72

Touch Pad 22154

When installing motor solenoid part number 15370 (per form number 1-841) or if motor solenoid is already installed on the vehicle, the enclosed diode part number 15059, must be connected to the small terminal of the motor solenoid and to the motor solenoid mounting bracket as shown below. **Note: Motor Solenoid must have a good ground in order to operate properly.**



The snow plow should only be in operation when the vehicle ignition switch and the control switch are in the "ON" position. Care should be taken to insure that the control switch is kept dry and free from moisture during normal operation.

When the control switch is turned "On," lights illuminate the location of the individual touch pads for the functions of the snow plow: (Up), (Angle Left), (Angle Right) and (Down).

Lowering of the snow plow an inch at a time is possible by tapping the down arrow in short intervals. Holding down the down arrow will activate a float light located in the upper left corner of the control switch. This light indicates the snow plow is now in the Lower/Float position. In this position the snow plow will be able to follow the contour of the road and the snow plow can also be angled to the left or right. Touching the up arrow automatically cancels the Lower/Float position.

This switch is self diagnosing. The monitor light is located in the upper left corner below the float light of the control switch.

When the monitor light turns on and begins to flash the control switch is sensing a problem with a specific coil/connection on the hydraulic unit. The diagnostic label is on the back side of your control switch.

Reset is accomplished by turning off the ignition switch or by turning the power switch off momentarily and then back on. If the monitor light is still illuminated after attempts to reset the switch have failed, contact your nearest authorized Meyer Distributor for repairs.

Drive Pro Mounting System – Dismount/OFF



1

1. Press down button until Float light turns Blue/on.



2

2. Push lift arm down until there is a little slack in the chain.



3

3. Remove crankstand from lift frame.



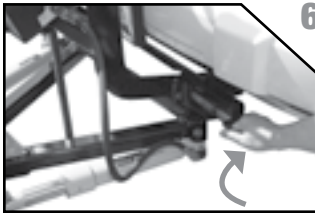
4

4. Attach crankstand to a-frame..



5

5. Adjust crankstand until crankstand comes into contact with the ground and then turn 1 to 2 revolutions.



6

6. Pull handle on driver's side to disengage pins then twist until the notch locks the pins in the open position.



7

7. Disconnect one piece electrical plug and install weather cover on male end.



8

8. Back vehicle away from plow assembly.



Drive Pro Mounting System – Mount/ON



1. Pull vehicle into plow assembly and push plow assembly forward an inch or two.



2. Twist handle on driver side to disengage the notch that locks open the pins.



3. Push back on lift frame until pins spring thru mount on vehicle.



4. Adjust crankstand until it is no longer in contact with the ground.



5. Remove crankstand from a-frame.



6. Attach crankstand to lift frame.



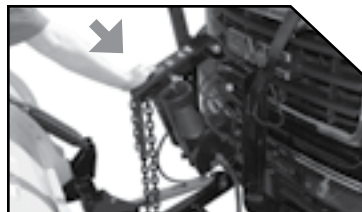
7. Remove weather cover on male end and connect one piece electrical plug. The spring loaded cover will lock one piece ring.

EZ Plus Mounting System – Dismount/OFF

For Lot Pro, Super-V and Diamond Edge Plows



1. Press down button until Float light turns Blue/on.



2. Push lift arm down until there is a little slack in the chain.



3. Remove crankstand from lift frame.



4. Attach crankstand to A-frame.



5. Adjust crankstand until crankstand comes into contact with the ground, then turn 1 to 2 revolutions.



6. While slightly pushing the lift frame towards vehicle, pull handles on either side to disengage pins then twist until the leg locks the pin in the open position.



7. Disconnect one piece electrical plug and install weather cover on male end.



8. Back vehicle away from plow assembly.



EZ Plus Mounting System – Mount/ON

For Lot Pro, Super-V and Diamond Edge Plows



1. Pull vehicle into plow assembly and push plow assembly forward an inch or two.



2. Twist handles on both sides to engage spring loaded pins.



3. Push back on lift frame until pins spring thru mount on vehicle.



4. Adjust crankstand until it is no longer in contact with the ground.



5. Remove crankstand from A-frame.



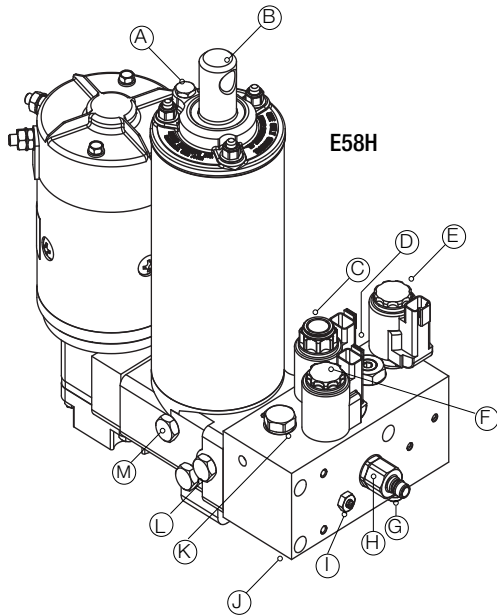
6. Attach crankstand to lift frame.



7. Remove weather cover on male end and connect one piece electrical plug. The spring loaded cover will lock one piece plug.

HYDRAULIC COMPONENT IDENTIFICATION

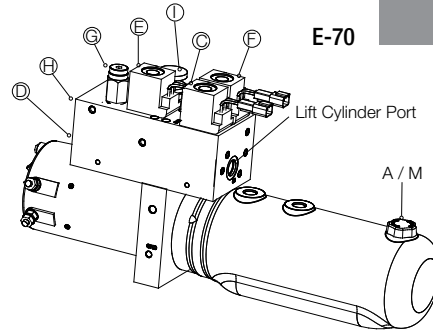
E58H/E-70/E-72 Hydraulics



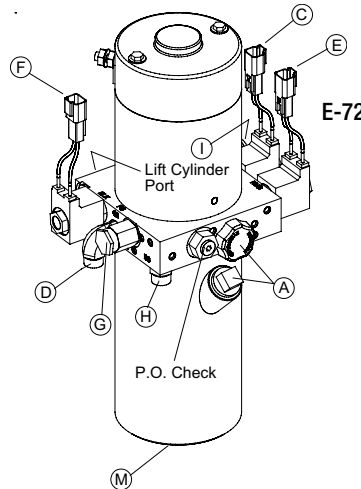
E58H

Key:

- A: Filler Hole & Relief Valve
- B: Lift Rod
- C: "B" Solenoid (Red)
- D: Right Angle Cylinder Connection
- E: "C" Solenoid (Green)
- F: "A" Solenoid (Black)
- G: Crossover Relief Valve
- H: Left Angle Cylinder Connection
- I: Lower Adjustment Screw
- J: Filter Port (Under Block)
- K: "B" Check Valve
- L: Filter Port
- M: Drain Plug



E-70



E-72

Hydraulics – Testing Tips (E58H/E70/E-72)

Before any troubleshooting is started, make certain the following conditions are met.

1. The moldboard is pointing straight ahead. If the unit is disabled, this can often be done by connecting the hose from the left cylinder into the right cylinder and pushing the snow plow by hand.
2. Check to ensure the power angling cylinders are installed correctly.
3. The solenoid coils must be on their proper valve: the “C”- coil (green and white wire), the “B”-coil (red and white wire) and the “A” coil (black and white wire).
4. The electrical installation must have been made according to installation instructions supplied by Meyer Products LLC.

TESTING

Many tests do not require removing the Power Unit from the vehicle. However, more thorough testing can be done by using the Meyer Test Stand (available at Authorized Servicing Dealers) which allows direct pressure and Amperage readings.

1. Use a screwdriver or other small tool to check for magnetism of solenoid coils “A”, “B” & “C”. Place the tool on the side of the coil and have an assistant operate the switch. You should feel magnetic attraction.
2. Use a test light or volt meter to determine whether there is power at harness or switches. (The wire must be probed)
3. When determining Amp draw of motor, always obtain the highest value possible, i.e., at maximum raise or angle with motor running.
4. Proper rotation for motor is indicated by an arrow on the top of the pump.
5. The pump shaft (all models) of a good pump can be turned smoothly using two fingers. If it cannot be turned easily, the pump is too tight and must be replaced.
6. Pump pressure can be measured at an angle hose (note pressure at full angle) or in the pressure filter port (an adapter is necessary for the filter port).
7. If hydraulic system is contaminated with oil or a substance other than Meyer Hydraulic Fluid, it is recommended that the hydraulic unit, power angling rams and hoses be drained and flushed clean with Meyer M-2 Flush Fluid. The system should then be refilled with Meyer M-1 Fluid.

	Raise	Lower	Angle Right	Angle Left	
MOTOR	X		X	X	MOTOR
A		X			A
B	X				B
C			X		C

E58H/E-70/E-72 Hydraulics –E58H/ Troubleshooting Guide

These charts are intended to be used as an aid in diagnosing Meyer Hydraulic Power Units. They are not a substitute for factory training and experience. Be certain to read the General Information and Testing Tips sections before attempting any troubleshooting. Additional detailed information as well as all electrical schematics may be found in Service Manuals 1-1047 + 1-1049@www.MeyerProducts.com.

CONDITION	POSSIBLE CAUSE	CORRECTION
<i>Plow does not lift or lifts slowly - motor operates</i>	<ol style="list-style-type: none"> 1. Low hydraulic fluid level. 2. Discharged battery. 3. Leaking or open "A" cartridge. 4. No current to "B" coil. (red and white or black wire) 5. Inoperative "B" coil. (red and white or black wire) 6. Malfunctioning motor. 7. Malfunctioning pump. 	<ol style="list-style-type: none"> 1. Add fluid to proper level 2. Recharge battery. 3. Clean or replace "A" cartridge. 4. Locate malfunction and repair. 5. Replace "B" coil. (red and white or black wire) 6. Repair or replace motor. 7. Replace pump.
<i>Plow does not angle right - motor operates</i>	<ol style="list-style-type: none"> 1. Improper coupler arrangement. 2. Mechanical bind or interference. 3. Malfunctioning coupler. (if equipped) 4. No current to "C" coil. (green and white or black wire) 5. Inoperative "C" coil. (green and white or black wire) 6. Inoperative "C" cartridge. 7. Leaking crossover relief valve. 	<ol style="list-style-type: none"> 1. Engage coupler properly. 2. Eliminate mechanical bind or interference. 3. Repair or replace coupler. 4. Locate malfunction and repair. 5. Replace "C" coil. (green and white or black wire) 6. Clean or replace "C" cartridge. 7. Replace crossover relief valve.
<i>Plow does not angle left - motor operates</i>	<ol style="list-style-type: none"> 1. Improper coupler arrangement. 2. Mechanical bind or interference. 3. Malfunctioning coupler. (if equipped) 4. Leaking crossover relief valve. 	<ol style="list-style-type: none"> 1. Engage coupler properly. 2. Eliminate mechanical bind or interference. 3. Repair or replace coupler. 4. Replace crossover relief valve.
<i>Plow does not angle - motor operates</i>	<ol style="list-style-type: none"> 1. Improper coupler arrangement. 2. Mechanical bind or interference. 3. Leaking crossover relief valve. 	<ol style="list-style-type: none"> 1. Engage coupler properly. 2. Eliminate mechanical bind or interference. 3. Replace crossover relief valve.

For questions please contact www.meyerproducts.com, or call 216-486-1313.



E-70/E-72 Hydraulics – Troubleshooting Guide

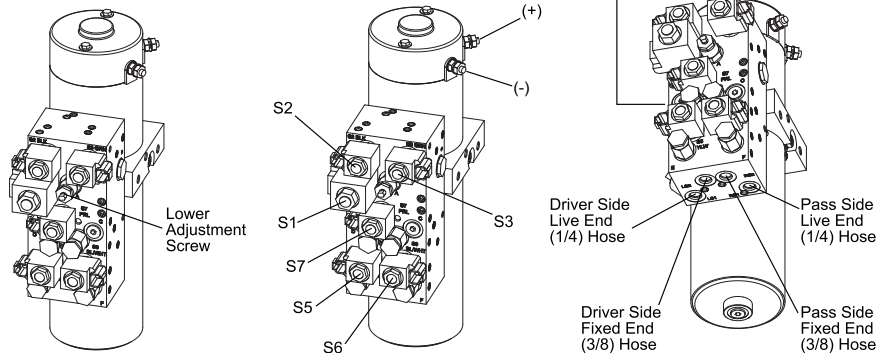
These charts are intended to be used as an aid in diagnosing Meyer Hydraulic Power Units. They are not a substitute for factory training and experience. Be certain to read the General Information and Testing Tips sections before attempting any troubleshooting. Additional detailed information as well as all electrical schematics may be found in Service Manuals 1-1047 + 1-1049@www.MeyerProducts.com.

CONDITION	POSSIBLE CAUSE	CORRECTION
<i>Flow will not hold in angled position</i>	<ol style="list-style-type: none"> 1. Air in cylinders and hoses. 2. Leaking dual pilot check valve. 3. Leaking crossover relief valve. 4. Crossover relief valve opening at too low a pressure. 	<ol style="list-style-type: none"> 1. Bleed cylinders and hoses. 2. Replace pilot check valve. 3. Replace crossover relief valve. 4. Replace crossover relief valve.
<i>Motor does not operate</i>	<ol style="list-style-type: none"> 1. Discharged or defective battery. 2. Loose/corroded electrical connections. 3. Inoperative starter solenoid. 4. Malfunctioning control switch. 5. Malfunctioning motor. 	<ol style="list-style-type: none"> 1. Recharge or replace battery. 2. Clean and tighten electrical connections. 3. Replace starter solenoid. 4. Replace control switch. 5. Repair or replace motor.
<i>Flow does not lower</i>	<ol style="list-style-type: none"> 1. No current to "A" coil. (black and white or black wire) 2. "A" cartridge jammed in closed position. 3. Inoperative "A" coil. (black and white or black wire) 4. Lower Adj. screw 	<ol style="list-style-type: none"> 1. Locate malfunction and repair. 2. Clean or replace "A" cartridge. 3. Replace "A" coil. (black and white or black wire) 4. Adj lower Adj. screw
<i>Flow creeps down</i>	<ol style="list-style-type: none"> 1. Leaking "A" cartridge. 2. Leaking "A" cartridge O-ring. 3. Leaking "B" check valve. 4. Leaking Ram Packing Cup. 5. Leaking O-ring at bottom of lift cylinder. 	<ol style="list-style-type: none"> 1. Clean or replace "A" cartridge. 2. Replace O-ring. 3. Clean or replace "B" check valve. 4. Replace Ram Packing Cup. 5. Replace O-ring.

For questions please contact www.meyerproducts.com, or call 216-486-1313.

Hydraulic Component Identification

V-70 Hydraulics



V-70	RAISE	LOWER	RIGHT RETRACT	RIGHT EXTEND	LEFT RETRACT	LEFT EXTEND	RIGHT ANGLE	LEFT ANGLE	VEE	SCOOP
Motor	X		X	X	X	X	X	X	X	X
S1	X	X								
S2	X	X							X	X
S3		X	X	X			X		X	X
S5						X				X
S6				X						X
S7			X		X				X	X



V-70 Hydraulics Testing Tips

Many tests do not require removing the Power Unit from the vehicle. However, more thorough testing can be done by using the Meyer Test Stand (available at Authorized Service Dealers) which allows direct pressure and Amperage readings.

TESTING

1. Use a screwdriver or other small tool to check for magnetism of solenoid coils (“S1,” “S2,” “S3,” “S5,” “S6” & “S7”). Place the tool on the coil and have an assistant operate the switch. You should feel magnetic attraction.
2. Use a test light or volt meter to determine whether there is power at harness or Super-V controller.
3. When determining Amp draw of motor, always obtain the highest value possible, i.e., at maximum raise or angle with motor running.
4. The pump shaft of a good pump can be turned smoothly using two fingers. If it can't be turned easily, the pump must be replaced.
6. Pump pressure can be measured at an angle hose (note pressure at full angle).
7. If hydraulic system is contaminated it is recommended that the hydraulic unit, power angling rams and hoses be drained and flushed with M-2 flush fluid. The system should then be refilled with Meyer M-1 oil.

V-70 Hydraulics – Troubleshooting Guide

These charts are intended to be used as an aid in diagnosing Meyer V-70 Hydraulic Power Units. They are not a substitute for factory training and experience. Be certain to read the General Information and testing tips sections before attempting any troubleshooting. Additional detailed info as well as all electrical schematics may be found in service manual 1-1024@www.meyerproducts.com.

CONDITION	POSSIBLE CAUSE	CORRECTION
<i>Plow does not lift or lifts slowly - motor operates.</i>	<ol style="list-style-type: none"> 1. Low hydraulic fluid level. 2. Discharged battery. 3. Bad "S1"/"S2" cartridge. 4. No current to "S1"/"S2" coil. 5. Malfunctioning motor. 6. Malfunctioning pump. 	<ol style="list-style-type: none"> 1. Add fluid to proper level 2. Recharge battery. 3. Replace "S1"/"S2" cartridge. 4. Locate malfunction and repair. 5. Repair or replace motor. 6. Replace pump.
<i>Plow does not lift, lower, vee or scoop. Press Vee and the right wing retracts.</i>	<ol style="list-style-type: none"> 1. Bad "S1"/"S2" cartridge. 2. No current to "S2" coil. 3. Bad "S2" coil. 	<ol style="list-style-type: none"> 1. Replace "S1"/"S2" cartridge. 2. Locate malfunction and repair. 3. Replace "S1"/"S2" coil.
<i>Plow does not lower, right wing does not extend or retract, will not angle right, vee or scoop. Press retract the left wing retracts. Press angle right the plow angles left.</i>	<ol style="list-style-type: none"> 1. Bad "S3" cartridge. 2. No current to "S3" coil. 3. Bad "S3" coil. 	<ol style="list-style-type: none"> 1. Replace "S3" cartridge. 2. Locate malfunction and repair. 3. Replace "S3" coil.
<i>Plow will not extend the left wing or scoop. Press left extend and the plow angles left.</i>	<ol style="list-style-type: none"> 1. Bad "S5" cartridge. 2. No current to "S5" coil. 3. Bad "S5" coil. 	<ol style="list-style-type: none"> 1. Replace "S5" cartridge. 2. Locate malfunction and repair. 3. Replace "S5" coil.
<i>Plow will not extend the right wing or scoop. Press right extend and the plow angles up.</i>	<ol style="list-style-type: none"> 1. Bad "S6" cartridge. 2. No current to "S6" coil. 3. Bad "S6" coil. 	<ol style="list-style-type: none"> 1. Replace "S6" cartridge. 2. Locate malfunction and repair. 3. Replace "S6" coil.

V-70 Hydraulics – Troubleshooting Guide

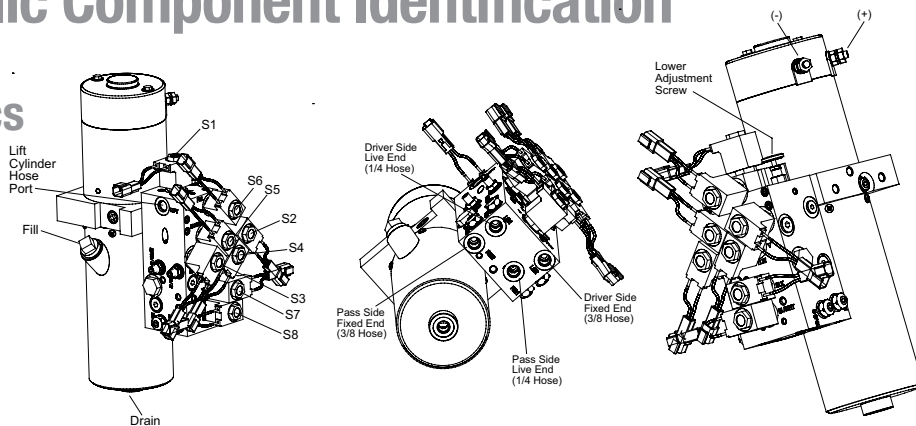
These charts are intended to be used as an aid in diagnosing Meyer V-70 Hydraulic Power Units. They are not a substitute for factory training and experience. Be certain to read the General Information and testing tips sections before attempting any troubleshooting. Additional detailed info as well as all electrical schematics may be found in service manual 1-1024@www.meyerproducts.com.

CONDITION	POSSIBLE CAUSE	CORRECTION
<i>Plow does not retract left or right wing, vee or scoop. Press right retract and the plow angles right. Press left retract and the plow angles left.</i>	<ol style="list-style-type: none"> 1. Bad "S7" cartridge. 2. No current to "S7" coil. 3. Bad "S7" coil. 	<ol style="list-style-type: none"> 1. Replace "S7" cartridge. 2. Locate malfunction and repair. 3. Replace "S7" coil.
<i>Plow will not hold in angled or scoop position.</i>	<ol style="list-style-type: none"> 1. Air in cylinders and hoses. 2. Leaking dual pilot check valve. 3. Leaking crossover relief valves. 4. Bad "S5" cartridge. 5. Bad "S6" cartridge. 6. Bad "S7" cartridge. 	<ol style="list-style-type: none"> 1. Bleed cylinders and hoses. 2. Replace pilot check valve. 3. Replace crossover relief valves. 4. Replace "S5" cartridge. 5. Replace "S6" cartridge. 6. Replace "S7" cartridge.
<i>Motor does not operate.</i>	<ol style="list-style-type: none"> 1. Discharged or defective battery. 2. Loose/corroded electrical connections. 3. Inoperative starter solenoid. 4. Malfunctioning control switch. 5. Malfunctioning motor. 	<ol style="list-style-type: none"> 1. Recharge or replace battery. 2. Clean and tighten electrical connections. 3. Replace starter solenoid. 4. Replace control switch. 5. Repair or replace motor.
<i>Plow does not lower.</i>	<ol style="list-style-type: none"> 1. Lower Adj. screw. 2. No current to "S1"/"S2"/"S3" coil. 3. Bad "S1"/"S2"/"S3" coil. 4. Bad "S1"/"S2"/"S3" cartridge. 	<ol style="list-style-type: none"> 1. Adj lower Adj. screw. 2. Locate malfunction and repair. 3. Replace "S1"/"S2"/"S3" coil. 4. Replace "S1"/"S2"/"S3" cartridge.
<i>Plow does not retract left or right wing.</i>	<ol style="list-style-type: none"> 1. Bad P.O., check valve. 	<ol style="list-style-type: none"> 1. Replace P.O., check valve.

Hydraulic Component Identification

V-71

Hydraulics



V-71	RAISE	LOWER	RIGHT RETRACT	RIGHT EXTEND	LEFT RETRACT	LEFT EXTEND	RIGHT ANGLE	LEFT ANGLE	VEE	SCOOP	V-71
Motor	X		X	X	X	X	X	X	X	X	Motor
S1		X									S1
S2						X	X				S2
S3					X			X	X		S3
S4			X				X		X		S4
S5				X				X		X	S5
S6	X										S6
S7						X	X			X	S7
S8				X				X		X	S8

V-71 Hydraulics Testing Tips

Many tests do not require removing the Power Unit from the vehicle. However, more thorough testing can be done by using the Meyer Test Stand (available at Authorized Service Dealers) which allows direct pressure and Amperage readings.

TESTING

1. Use a screwdriver or other small tool to check for magnetism of solenoid coils (S1,S2, S3, S4, S5, S6, S7 and S8). Place the tool on the coil and have an assistant operate the switch. You should feel magnetic attraction.
2. Use a test light or volt meter to determine whether there is power at harness or V-71 controller.
3. When determining Amp draw of motor, always obtain the highest value possible, i.e., at maximum raise or angle with motor running.
4. The pump shaft of a good pump can be turned smoothly using two fingers. If it can't be turned easily, the pump must be replaced.
6. Pump pressure can be measured at an angle hose (note pressure at full angle).
7. If hydraulic system is contaminated it is recommended that the hydraulic unit, power angling rams and hoses be drained and flushed with M-2 flush fluid. The system should then be refilled with Meyer M-1 oil.

V-71 Hydraulics – Troubleshooting Guide

These charts are intended to be used as an aid in diagnosing Meyer V-71 Hydraulic Power Units. They are not a substitute for factory training and experience. Be certain to read the General Information and testing tips sections before attempting any troubleshooting. Additional detailed info as well as all electrical schematics may be found in service manual 1-1048@www.meyerproducts.com.

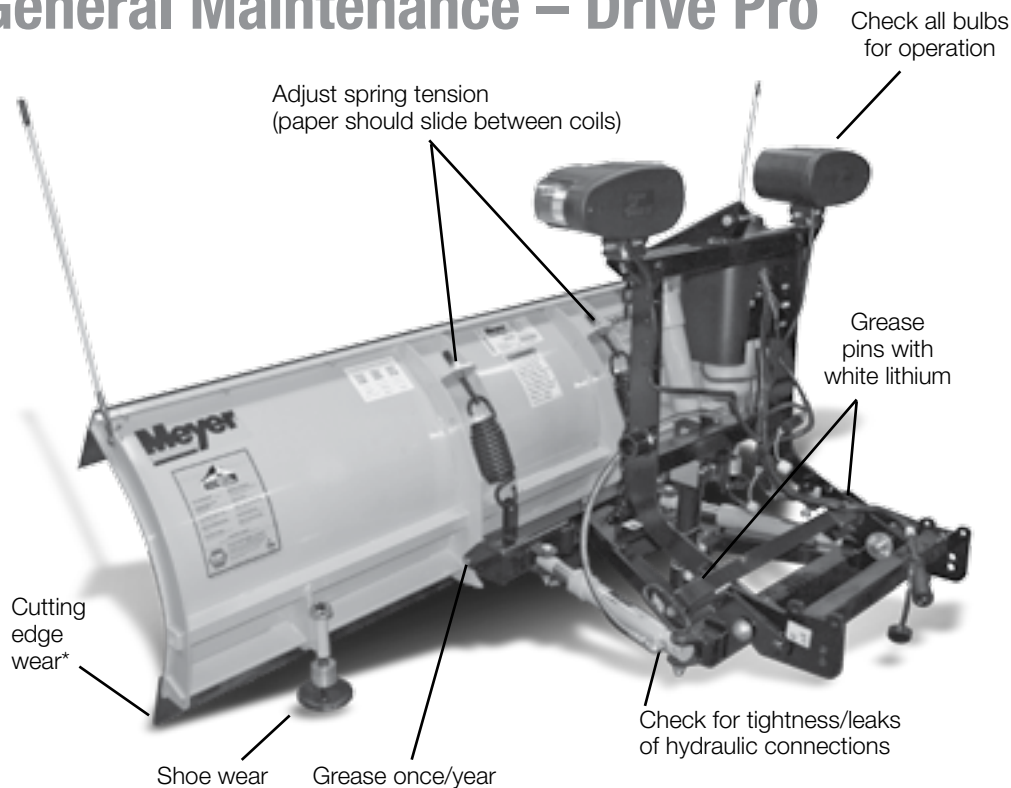
CONDITION	POSSIBLE CAUSE	CORRECTION
<i>Plow does not lift or lifts slowly - motor operates.</i>	<ol style="list-style-type: none"> 1. Low hydraulic fluid level. 2. Discharged battery. 3. Bad "S6" cartridge. 4. No current to "S6" coil. 5. Malfunctioning motor. 6. Malfunctioning pump. 	<ol style="list-style-type: none"> 1. Add fluid to proper level 2. Recharge battery. 3. Replace "S6" cartridge. 4. Locate malfunction and repair. 5. Repair or replace motor. 6. Replace pump.
<i>Plow does not lower.</i>	<ol style="list-style-type: none"> 1. Bad "S1" cartridge. 2. No current to "S1" coil. 3. Bad "S1" coil. 	<ol style="list-style-type: none"> 1. Replace "S1" cartridge. 2. Locate malfunction and repair. 3. Replace "S1" coil.
<i>Plow does not left retract, angle left or vee.</i>	<ol style="list-style-type: none"> 1. Bad "S3" cartridge. 2. No current to "S3" coil. 3. Bad "S3" coil. 	<ol style="list-style-type: none"> 1. Replace "S3" cartridge. 2. Locate malfunction and repair. 3. Replace "S3" coil.

V-71 Hydraulics – Troubleshooting Guide

These charts are intended to be used as an aid in diagnosing Meyer V-71 Hydraulic Power Units. They are not a substitute for factory training and experience. Be certain to read the General Information and testing tips sections before attempting any troubleshooting. Additional detailed info as well as all electrical schematics may be found in service manual 1-1048@www.meyerproducts.com.

CONDITION	POSSIBLE CAUSE	CORRECTION
<i>Plow does not right retract, angle right or vee.</i>	<ol style="list-style-type: none"> 1. Bad "S4" cartridge. 2. No current to "S4" coil. 3. Bad "S4" coil. 	<ol style="list-style-type: none"> 1. Replace "S4" cartridge. 2. Locate malfunction and repair. 3. Replace "S4" coil.
<i>Plow does not left extend, angle right or scoop.</i>	<ol style="list-style-type: none"> 1. Bad "S2" or "S7" cartridge. 2. No current to "S2" or "S7" coil. 3. Bad "S2" or "S7" coil. 	<ol style="list-style-type: none"> 1. Replace "S2" or "S7" cartridge. 2. Locate malfunction and repair. 3. Replace "S2" or "S7" coil.
<i>Plow does not right extend, angle left or scoop.</i>	<ol style="list-style-type: none"> 1. Bad "S5" or "S8" cartridge. 2. No current to "S5" or "S8" coil. 3. Bad "S5" or "S8" coil. 	<ol style="list-style-type: none"> 1. Replace "S5" or "S8" cartridge. 2. Locate malfunction and repair. 3. Replace "S5" or "S8" coil.

General Maintenance – Drive Pro



Lights



Main Plug Connection

All electrical connections cleaned
and add dielectric grease
once/month



*6" tall when new

See pages 47-48 for more detailed explanation of maintenance steps

General Maintenance – Lot Pro* Lot Pro LD



Lights

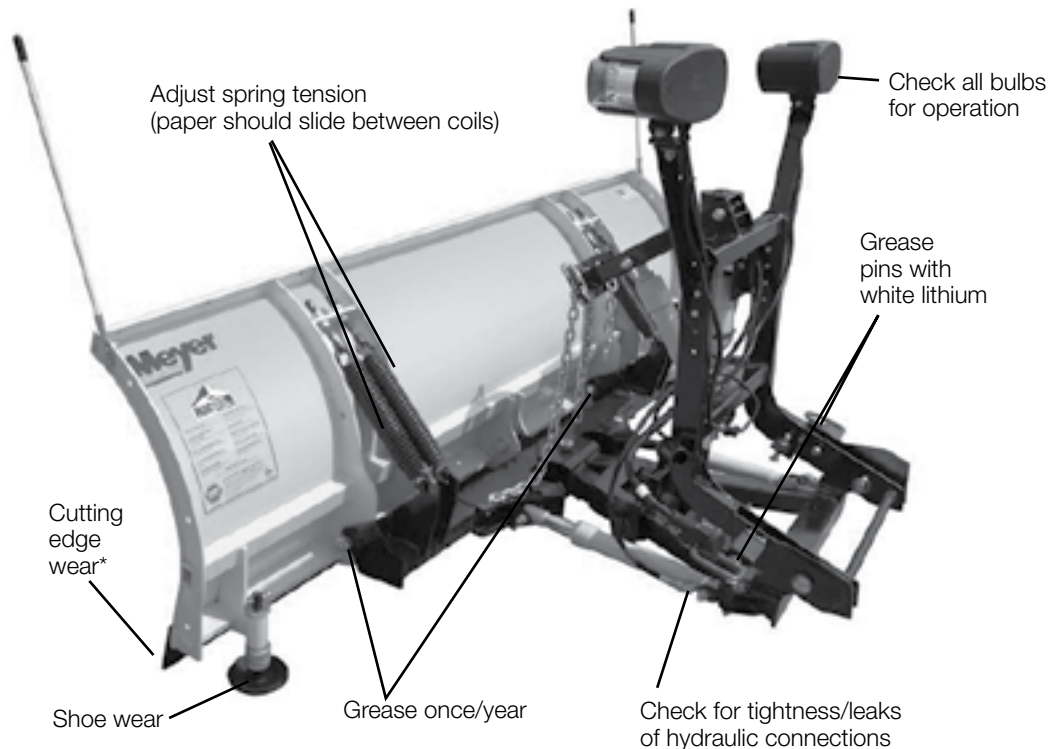


Main Plug Connection

All electrical connections cleaned and add dielectric grease once/month



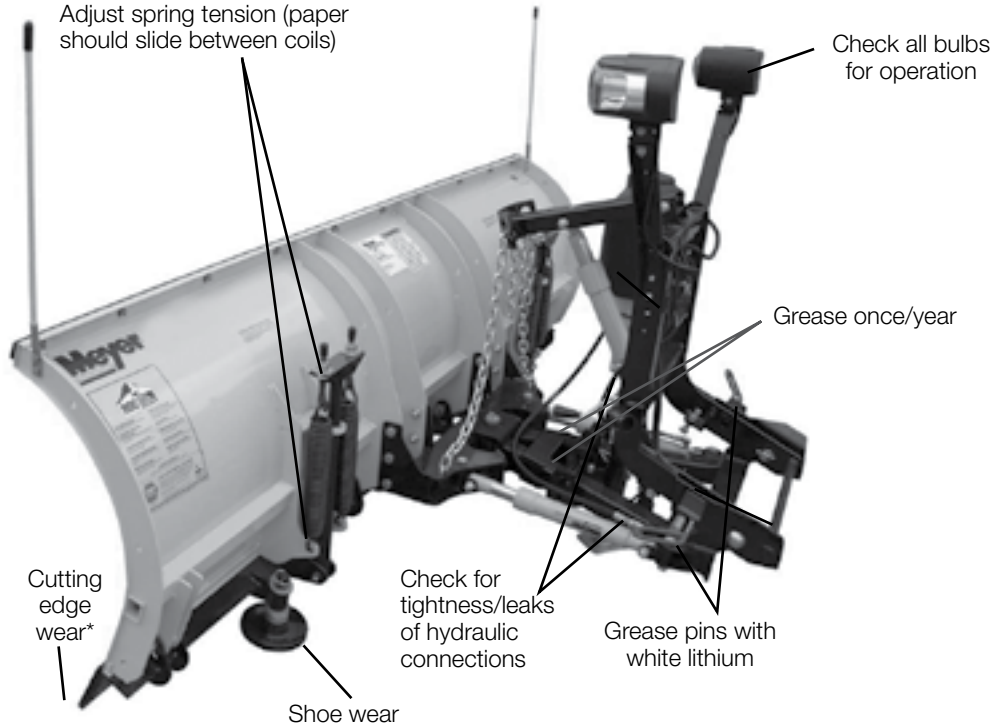
E-72



*6" tall when new

See pages 47-48 for more detailed explanation of maintenance steps

General Maintenance – Diamond Edge



Lights



Main Plug Connection

All electrical connections cleaned and add dielectric grease once/month



*6" tall when new

See pages 47-48 for more detailed explanation of maintenance steps

General Maintenance – Super-V



Lights



Main Plug Connection

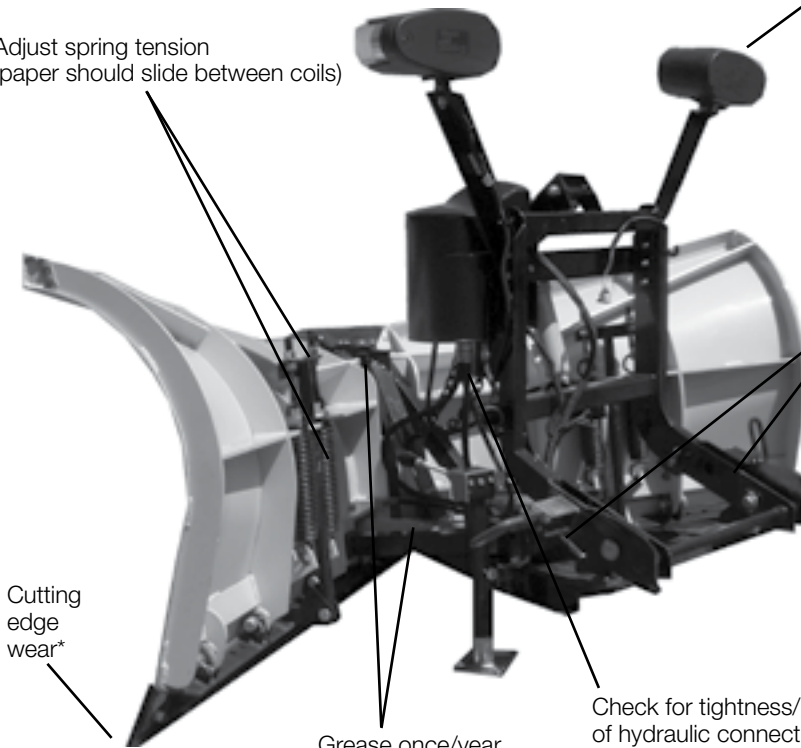
All electrical connections cleaned and add dielectric grease once/month



V-70

Adjust spring tension
(paper should slide between coils)

Check all bulbs
for operation



Grease
pins with
white lithium

Cutting
edge
wear*

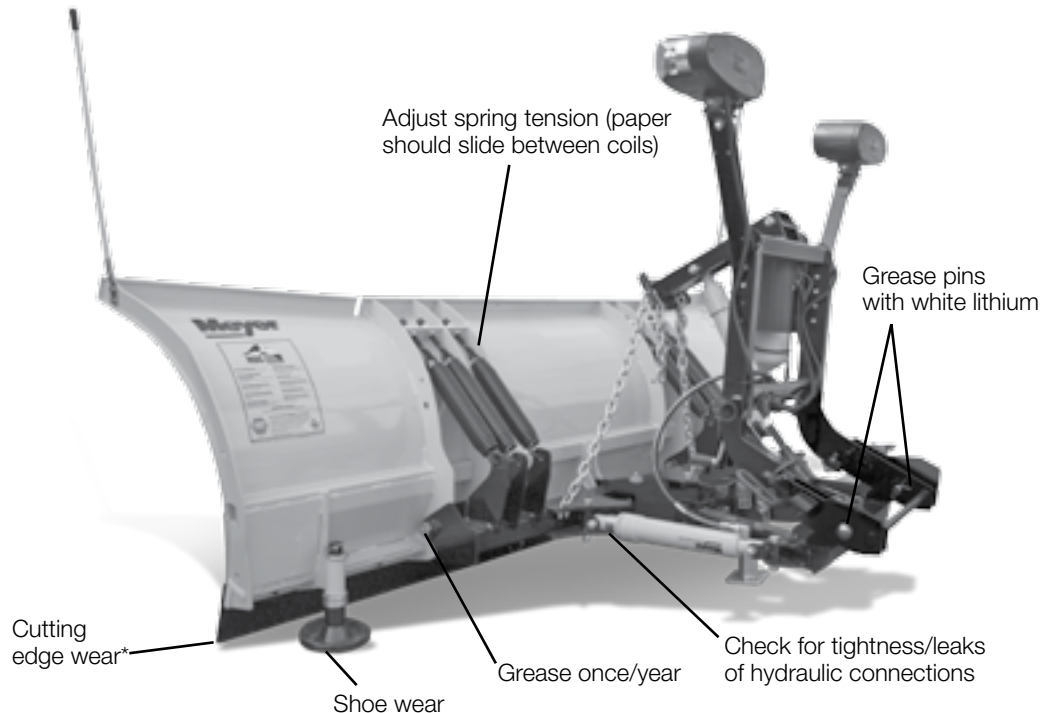
Check for tightness/leaks
of hydraulic connections

Grease once/year

See pages 47-48 for more detailed explanation of maintenance steps

*6" tall when new

General Maintenance – Road Pro 32



Lights



Main Plug Connection

All electrical connections cleaned and add dielectric grease once/month

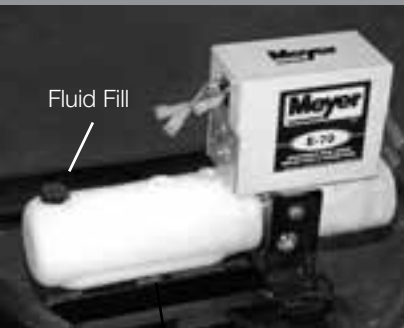


E-72

*6" tall when new

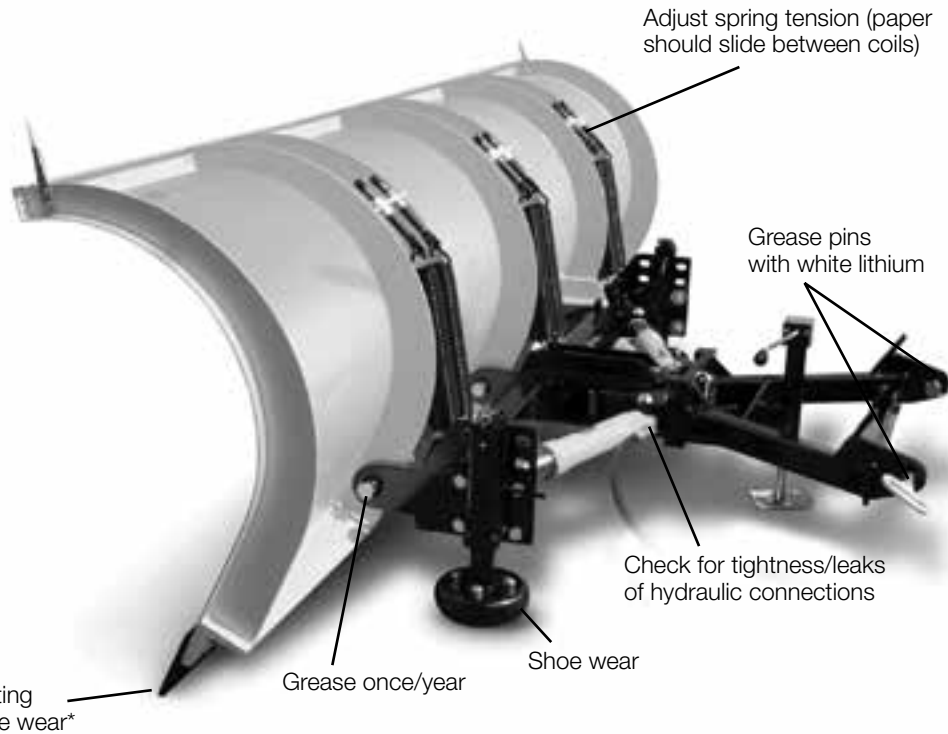
See pages 47-48 for more detailed explanation of maintenance steps

General Maintenance – Road Pro 36



Fluid Fill

Fluid Drain



Adjust spring tension (paper should slide between coils)

Grease pins with white lithium

Check for tightness/leaks of hydraulic connections

Shoe wear

Grease once/year

Cutting edge wear*

*6" tall when new

See pages 47-48 for more detailed explanation of maintenance steps

General Maintenance



Tightening the Trip Spring and Adjusting the Eye Bolt

To properly adjust the Trip Springs, tighten the top locknut 4 (four) complete rotations beyond the point that the coils begin to separate. Tighten the bottom locknut to hold eyebolt in position. It is important that each eye bolt is locked in this position to work properly when the moldboard experiences tripping action.

Greasing the Pivot pins, King bolt and A-frame plates (GTT equipped plows only)

Use a grease gun to grease pivot pins, king bolt and A-frame mating plates on GTT equipped plows. This will keep your plow operating smoothly.

Maintaining Cutting Edge and Mounting Bolts

Monitor the cutting edge of your plow for excessive wear and tear. Replace it as soon as it appears worn on either corner approximately 4" (2" on Super-V Plow). Replacing the cutting edge will prevent damage to the moldboard. Also, check and retighten all mounting bolts after the first plowing session of the season and at regular intervals throughout the season.

Checking Oil Level

Use a standard drinking straw or clean stick to check your fluid level. Remove the filler cap and dip the straw into the fluid reservoir. Always check fluid level with the lift piston fully retracted. The fluid level should be 1-1/2" below the filler hole (at the top for Super-V Plow). If your fluid is low or appears excessively dirty, change your hydraulic fluid. Only use (#15134) Meyer Hydraulic M-1 Fluid. Change once per year.

Monitoring the Condition of Your Hoses, Couplers and Rams

Check all hoses for bubbles or cuts and couplers for rust or leaks. A failure in a hose or coupler will result in a loss in oil pressure and cause power angling failure. Check rams for rust and leaks, either of these problems can introduce water into your hydraulic system which may cause freeze-ups. If you find any of these problems, replace the damaged parts with Meyer Genuine Parts available from your local authorized retailer.

Monitoring the Electrical System and Battery Terminal Connections

For maximum efficiency, the vehicle supporting the plow must be properly serviced. The system should consist of at least a 70-amp/hr battery and a 60-amp alternator. Be sure to regularly check the battery terminals to assure that they're clean and free of corrosion, adding (#15632) dielectric grease to all connections will help





General Maintenance

prevent corrosion from occurring. Also check the electrical connections to assure they're tight and corrosion free. Make sure that all wires are being held clear from moving or hot engine parts or from sharp sheet metal. For maximum efficiency, the battery, alternator, and regulator must be in top operating condition to assure maximum electrical output.

Adjusting the Drop Speed

The rate at which the plow is lowered is adjustable. Turning the Lower Adjusting Screw in (clockwise) will decrease the speed at which the plow is lowered by gravity, and turning the screw out (counter-clockwise) will increase the drop speed.

Adjusting the Runners

Inspect moldboard runners for wear and replace them as soon as they start to wear through. Adjust the runners to maintain cutting edge height of 1/2" above ground in snow plowing position. Set plow higher when plowing on gravel driveways.

Storing the Plow and Hydraulic Unit

After you have disconnected the plow from your vehicle, extend the lift cylinder to end of the stroke and coat the lift rod with light grease. This fills the cylinder with hydraulic fluid and protects the interior and exterior from rust and corrosion. Also coat the exposed portions of the power angling cylinder rods with light grease. Be sure to reconnect the quick couplers at the Power Angling rams and plug in the weather plugs on Hydraulic Unit to keep them clean and to prevent contamination of the system. Coat all pivot pins and other wear points with chassis lubricant. Unplug all electrical connections at the power unit. Coat all connections with a dielectric compound to prevent corrosion and plug them into their corresponding plugs. Unplug the plow lights, use dielectric compound at light connections to prevent corrosion. **WARNING: THE LIFT ARM EXTENDS BEYOND THE BUMPER OF THE VEHICLE. TO MINIMIZE DAMAGE IN A FRONT END COLLISION, THE LIFT ARM SHOULD BE REMOVED FROM THE VEHICLE WHEN YOUR SNOWPLOW IS REMOVED.** Meyer M-2 Hydra-Flush should be used to flush contaminants from the system. It should also be used for off-season storage.

Pre-Season Maintenance

Meyer Products LLC recommends this maintenance information for regular service. Sustained heavy operation may call for more frequent service. Snow plowing subjects a vehicle to exceptionally rugged use. As a result, it is very important to inspect and bring the snow plow and vehicle up to maximum operating conditions. ***Inspection should be made of both the vehicle and snowplow prior to the plowing season and after each use.***

PRE-SEASON MAINTENANCE

Scheduled vehicle maintenance should be performed as recommended by the manufacturer.

Don't forget that in addition to keeping equipment in order:

1. Keep windshield wipers, heaters and lights working.
2. Use emergency flasher lights for increased visibility and safety.
3. Equip vehicles with chains where necessary.
4. Provide operators with protective clothing and with rubber gloves for handling snow melting chemicals.

VEHICLE ELECTRICAL SYSTEM

For maximum efficiency, the vehicle supporting the snow plow must be properly serviced. The system should consist of at least a 70 amp./hr. battery and a 60 amp alternator. Be sure to check regularly:

1. Battery terminals to assure they're clean and free of corrosion.
2. Electrical connections, to assure they're tight and corrosion free.
3. Battery must be in top operating condition.
4. Alternator and regulator, to assure maximum electrical output.

SNOWPLOW CAUTION: ALWAYS LOWER MOLDBOARD TO THE GROUND WHEN SNOW PLOW IS BEING SERVICED OR WHEN VEHICLE IS NOT IN USE.



Visit www.MeyerProducts.com for a complete list of your plow system maintenance items!



Protects your electrical system with Meyer winter formula dielectric grease.

Visit www.MeyerProducts.com



Visit www.MeyerProducts.com for a complete list of your plow system maintenance items!



Yellow and black paint is formulated to withstand harsh temperatures and the winter environment.

Visit www.MeyerProducts.com

Pre-Season Maintenance

Check the Diagnosis chart, pages 28-29, 30-31, respectively and Pre/Post Season Maintenance, pages 38-40, for advice on maintaining the unit.

1. Check and maintain hydraulic fluid reservoir level to Full. Oil level should be checked with lift ram down or retracted position.
2. Check entire hydraulic system for leaks. A significant drop in hydraulic fluid level is evidence of a leak which must be corrected to prevent serious damage.
3. Before and after each season, Grease all pins and lubricate all pivot points with chassis lube.
4. **ADJUSTING TRIP SPRING TENSION** - Tighten top locknut 4 turns beyond the point when spring coils begin to separate. Tighten bottom locknut to hold eye bolt in position as shown
5. **RUNNERS/SHOES** (optional on V-Plows)
 - A. Inspect moldboard runners for wear and height adjustment.
 - B. Always replace runners as soon as they start to wear through.
 - C. Adjust the runners to maintain cutting edge height of 1/2" above ground in snow plowing position. (Can be set higher when used on gravel driveways).
6. **CUTTING EDGE - REVERSIBLE ON TRIP EDGE PLOWS** - Replace the cutting edge as soon as it appears worn. This will prevent permanent damage to the plow.
7. **MOUNTING BOLTS** - Retighten all mounting bolts after first snow plowing session and at regular intervals through the season.
8. **SNO-FLO® POWDER COATING**, both black and yellow, should be checked at the beginning and end of each season for any signs of rust. If any exists, use Meyer special Sno-Flo® powder coat touch-up available in spray cans.
9. Check lighting system to make sure all bulbs are functioning: headlights Hi/Low - turn signals.

NOTE: PROTECTION AGAINST RUST AND CORROSION

When the power unit is not used for extended periods, **protect the chromed lift rod by fully extending and coating it with chassis lubricant.** Coat the exposed portions of the power angling cylinder rods with chassis lubricant to protect against corrosion.

Post-Season Summer Maintenance



1. Draining & Replacing Meyer M-1 Hydraulic Fluid

Drain the fluid by removing the drain plug located on the bottom of unit. To drain the fluid from the power angling cylinders, disconnect the fittings and completely retract the cylinder rods and purge cylinders and hoses of all hydraulic fluid. The complete system should then be flushed out with Meyer M-2 Flushing Fluid before adding new Meyer Hydraulic Fluid.

2. **Meyer M-1 Hydraulic Fluid (#15134)** is specially formulated with an anti-ice additive for almost constant viscosity in subzero temperatures. Because it is free-flowing in extreme cold, the unit's performance and efficiency are not affected by winter weather. It is effective for a maximum of one year. Always carry an extra quart of **Meyer M-1 Hydraulic Fluid**. Use of any inferior fluids will void the Meyer warranty.

3. Refill power unit with **Meyer M-1 Hydraulic Fluid** by fully retracting lift piston and filling reservoir to top. **Note: Do not over fill unit.** Super-V Plow must be in the VEE position before filling, over filling unit will cause oil to squirt out of the reservoir pressure relief valve. Power angling rams should be collapsed. Install Hydraulic unit and Moldboard assembly on vehicle. Remove reservoir pressure relief valve (Filler plug). To bleed air from the system power angle wings side to side while maintaining a constant check on the reservoir fluid level. **Note:** It may be necessary to bleed air from the Power angling cylinders by loosening the hydraulic fittings. Angle plow left and right or extend and retract wings until you have a steady stream of oil coming out of fitting. Raise and lower the plow several times. With lift ram fully retracted (down) check fluid level and replace filler plug.

Visit www.MeyerProducts.com for a complete list of your plow system maintenance items!



Meyer M1 Hydraulic oil and Flush is scientifically formulated to withstand extreme winter temps up to -40°F.

Snow Plow Storage

Visit www.MeyerProducts.com for a complete list of your plow system maintenance items!



Optional plow carts make it easy to move your plow during off-season storage.

1. When snow plow is disconnected, **disconnect lift chains from lift arm and extend lift cylinder to end of stroke and coat chrome rod with light grease.** This fills the cylinder with hydraulic fluid and protects the interior and exterior from rust and corrosion.
2. Whenever Moldboard is disconnected, coat the exposed portions of the power angling cylinder chrome rods with light grease to protect them from corrosion.
3. Coat pivot pin and other wear points with chassis lubricant. Be sure to grease all grease holes.
4. Unplug electrical connection at power unit. Coat connection with a dielectric compound to prevent corrosion and plug into their corresponding weather plug.
5. Reference post season summer maintenance on page 40 prior to final storage.

Meyer® Snow Plows

Limited Warranty

What is Covered: Meyer Products, LLC, warrants to the original purchaser of Meyer® brand products that they will be free from defects in materials or workmanship, with the exceptions stated below. No person is authorized to change this warranty or to create any additional warranty on Meyer® products.

How Long Coverage Lasts: This warranty runs for a period of two years from the date of purchase on any purchase of a complete Snow Plow Package¹. If the Package consists of an E-58H, E-70, E-72, V-70 or V-71 hydraulic unit along with a Pro-series plow (Path Pro, Drive Pro, Lot Pro, Super-V and Road Pro); and is registered online at www.meyerproducts.com within sixty (60) days of purchase, your warranty for the Package will be extended for a period of three years. In addition to the warranties covering a complete Snow Plow Package and Structural Steel, you will receive a warranty for a period of one year from the date of purchase on individual parts, components, or accessories. All foregoing warranties apply only to an original purchaser of the product if the product is installed by an authorized Distributor/Sub-Distributor and terminate if the product is sold or otherwise transferred. Some states do not allow limitations on how long an implied warranty lasts, so the above limitation may not apply to you.

What is Not Covered: This warranty does not cover:

- Problems caused by failure to follow the product instructions, failure to maintain the product as described in the Operator's Manual, or failure to maintain proper levels of lubricants;
- Problems caused by contamination or restriction of lubricant systems, or damage resulting from rust, corrosion, freezing or overheating.
- Paint or expendable snowplow parts such as pins, runners, cutting edges, chrome plating, springs and markers.
- Damage to any vehicle to which the products are mounted, or the suitability of any product for vehicles which are not fitted with the appropriate heavy-duty snow plow service preparation parts.
- Damage caused by usage that is not in accordance with product instructions (use of the snow plow for any purpose other than plowing snow is considered misuse and abuse).
- Any snow plow, or any part, component, or assembly thereof, which has been modified or altered.
- Problems caused by using accessories, parts, or components not supplied by Meyer Products.
- Cost of tax, freight, transportation or storage charges, environmental charges, solvents, sealants, lubricants or any other normal shop supplies.
- Problems caused by collision, fire, theft, vandalism, riot, explosion, lightning, earthquake, windstorm, hail, water, flood, or any other Acts of God.
- Liability for damage to property, or injury to, or death of any person arising out of the operation, maintenance or use of the covered product.
- Products with missing or altered serial numbers.

¹A complete Snow Plow Package consists of the hydraulic motor, operating controller, lift-frame, moldboard and all related items.

²Structural elements consist of the mounting, lift-frame, A-frame, sector, and the moldboard.

AMERICA'S
BEST
WARRANTY

5
YEARS

Meyer® Snow Plows Limited Warranty



The original purchaser's sole and exclusive remedy against Meyer Products and its Distributors and Sub-Distributors, and Meyer Products' sole obligation for any and all claims, whether for breach of contract, warranty, tort (including negligence) or otherwise shall be limited to providing, through its authorized Distributor/ Sub-Distributor network, all labor and/or parts necessary to correct such defects free of charge. Any cost incurred in returning the product to an authorized Meyer® Distributor/Sub-Distributor is the responsibility of the original purchaser. ALL EXPRESS AND IMPLIED WARRANTIES FOR THE PRODUCT, INCLUDING, WITHOUT LIMITATION, ANY IMPLIED WARRANTIES OF MERCHANTABILITY AND FITNESS FOR A PARTICULAR PURPOSE, ARE LIMITED IN TIME TO THE TERM OF THE LIMITED WARRANTY PERIOD. NO WARRANTIES, WHETHER EXPRESS OR IMPLIED, WILL APPLY AFTER THE LIMITED WARRANTY PERIOD HAS EXPIRED. Meyer Products disclaims liability beyond the remedies provided for in this limited warranty, and disclaims all liability for incidental, consequential, and special damages, including, without limitation, any liability for third-party claims against you for damages, for products not being available for use, or for lost profits. Meyer Products' liability will be no more than the amount you paid for the product that is the subject of a claim; this is the maximum amount for which we are responsible. Some states do not allow the exclusion or limitation of incidental or consequential damages, so the above limitation or exclusion may not apply to you.

What Meyer Products Will Do: Meyer Products will repair any product that proves to be defective in materials or workmanship. In the event repair is not possible or practical (as determined by Meyer Products in its sole discretion), Meyer Products will either replace the product with a new product of similar model and price, or refund the full purchase price, as determined by Meyer Products.

Customer Responsibilities: Customer must keep the complete Snow Plow Package serviced/maintained as recommended by Meyer Products. A written record of service must be maintained, along with receipts for maintenance materials purchased. A copy of the maintenance record and pertinent receipts may be requested in the event of a claim.

Meyer offers a complete line of spreaders for any application and vehicle size. Go to www.MeyerProducts.com for more information.

Meyer® Snow Plows Limited Warranty



The original purchaser's sole and exclusive remedy against Meyer Products and its Distributors and Sub-Distributors, and Meyer Products' sole obligation for any and all claims, whether for breach of contract, warranty, tort (including negligence) or otherwise shall be limited to providing, through its authorized Distributor/Sub-Distributor network, all labor and/or parts necessary to correct such defects free of charge. Any cost incurred in returning the product to an authorized Meyer® Distributor/Sub-Distributor is the responsibility of the original purchaser. ALL EXPRESS AND IMPLIED WARRANTIES FOR THE PRODUCT, INCLUDING, WITHOUT LIMITATION, ANY IMPLIED WARRANTIES OF MERCHANTABILITY AND FITNESS FOR A PARTICULAR PURPOSE, ARE LIMITED IN TIME TO THE TERM OF THE LIMITED WARRANTY PERIOD. NO WARRANTIES, WHETHER EXPRESS OR IMPLIED, WILL APPLY AFTER THE LIMITED WARRANTY PERIOD HAS EXPIRED. Meyer Products disclaims liability beyond the remedies provided for in this limited warranty, and disclaims all liability for incidental, consequential, and special damages, including, without limitation, any liability for third-party claims against you for damages, for products not being available for use, or for lost profits. Meyer Products' liability will be no more than the amount you paid for the product that is the subject of a claim; this is the maximum amount for which we are responsible. Some states do not allow the exclusion or limitation of incidental or consequential damages, so the above limitation or exclusion may not apply to you.

What Meyer Products Will Do: Meyer Products will repair any product that proves to be defective in materials or workmanship. In the event repair is not possible or practical (as determined by Meyer Products in its sole discretion), Meyer Products will either replace the product with a new product of similar model and price, or refund the full purchase price, as determined by Meyer Products.

MEYER PRODUCTS, LLC

18513 Euclid Avenue
Cleveland, OH 44112



Figure 1



Figure 2

It pays to keep your Meyer ALL Meyer.

Meyer Genuine Parts are designed to fit properly and perform better and last longer – which means you save money by replacing fewer parts less often. In addition, all Meyer Genuine Parts:

- › Comply with Meyer specifications and technical standards
- › Maintains the warranty on your original equipment
- › Fit perfectly and reduces installation time
- › Guarantee original equipment quality

Look for the Meyer name on all your replacement parts.

For more information visit our web site

www.meyerproducts.com





Meyer Snow Plows are protected by one or more of the following patents: 8006413, D0507999 S, D05179635, 8453358, 8695238, 7,918,042 B2, CA 2,677,509 C, D0517963 S, EP 1,989,402 B1, ES 2,346,587, 6138388, 7,591,087 B2, 7,661,211 B2, 7,793,440 B1, 8739437, 8793906, CA 2,604,085C, 6354024, 6276075, 6,318,975 B1, 6564479, 6256909, 6594923, 6618964, 7114270, 7117617, 7290359, D399326 S, CA 2,300,012 C, CA 2,314,772 C, CA 2,331,653 C, CA 2,370,925 C, CA 2,455,637 C, CA 2,653,801 C, CA 2,654,856, EP 1,010,809, 7353628, 6153975, 6273729, CA 2,260,509 C, CA 2,282,045 C, CA 2,293,858 C, CA 2,298,243 C, 6265829, 6015219, 6005300, 6163985.

Meyer Products carries a full line of spreaders and other products including:



Broadcast Spreaders

If you are looking for a heavy-duty broadcast spreader for all-season use, look no further.



Tailgate Spreaders

With direct drive motors that help the auger to grind through large chunks of material, jams are a thing of the past.



Insert Hopper

Featuring an unprecedented ten-year warranty on the virtually indestructible polyethylene hopper, Meyer outlasts virtually every hopper on the market.



Dump Truck

Getting a good return on your dump truck is important. That's why we make the very best Under Tailgate Spreaders (UTG) and Replaceable Tailgate Spreaders (RTG) available.



The Big Yellow Box

The Big Yellow Box is perfect for storing rock salt, sand, chemicals, tools or anything you need to keep dry and secure.



Payload™ Insert Dump

The Payload™ Insert Dump bed is the quickest and easiest way to improve your bottom line and hauling productivity for your ¾ ton+ pick-up truck.

Form#4-550R2

Part# 90764

0714

Meyer Products LLC
18513 Euclid Avenue
Cleveland, OH 44112-1084
216-486-1313
www.meyerproducts.com

Dealer Information: