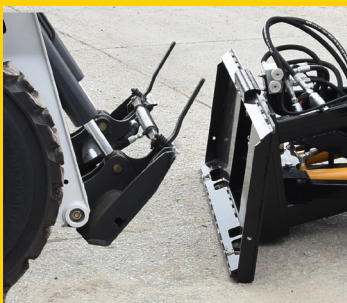




Shown in stainless steel.

Bring your skid steer out of hibernation.



Our universal mounting plate system now allows you to attach our versatile Super-V2 plow to your off-road vehicle. Turning it into an all-season beast, easily able to maneuver in and around tight areas to get after snow and leave behind nice, neat, high stacks.

Meyer[®]

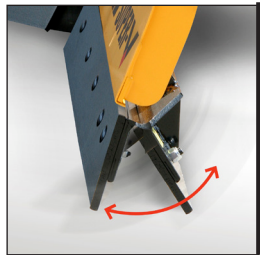
Suddenly, your skid steer is your most versatile plow.

Go configure.



Super-V2's double-acting cylinders lock blade into desired position, while tapered wing design clears snow up to 62% better

The 70-degree attack angle rolls snow more effectively and Ground Tracking Technology™ allows moldboard to follow contour of the surface for better clearing



Bottom-trip edge so moldboard remains upright and load is not lost

Slot and tab construction for superior strength and durability, and blade stops for extra support



Exclusive touch pad controller easily sets plow configuration

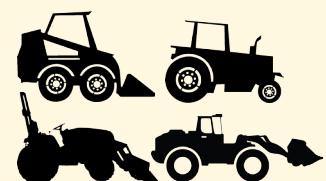
To learn more, please visit www.meyerproducts.com

Available in stainless steel and carbon steel



Meyer Products LLC
18513 Euclid Ave., Cleveland, Ohio 44112
Phone: 216-486-1313
Fax: 216-486-1321

Model #	Material	Length	Height (center to edge)	Avg. Width Full Angle	Weight w/plate
SV2-8.5	12 Gauge Steel	8'6"	34" to 38.4"	88"	1159 lbs.
SV2-9.5	12 Gauge Steel	9'6"	34.63" to 39.5"	99"	1199 lbs.
SV2-10.5	12 Gauge Steel	10'6"	34.86" to 40.6"	109"	1239 lbs.
SS SV2-8.5	12 Gauge Stainless Steel	8'6"	34" to 38.3"	88"	1235 lbs.
SS SV2-9.5	12 Gauge Stainless Steel	9'6"	34.63" to 39.5"	99"	1300 lbs.
SS SV2-10.5	12 Gauge Stainless Steel	10'6"	34.86" to 40.7"	109"	1365 lbs.



Attaches to: skid steers, utility tractors, compact tractors, compact wheel loaders.